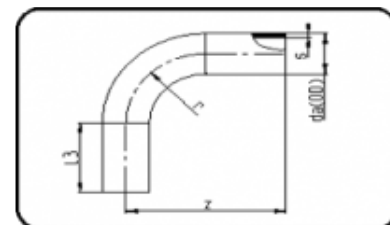


45° Bend – 300mm

Agruline

AGRU Code: 001.2 300mm Both Sides – Injection Moulded / Welded Butt Weld & Socket Weld Available in PE100 Black



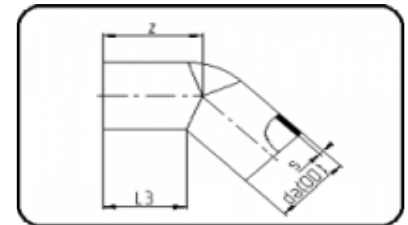
| DIMENSION | CODE | DETAIL | da(OD) mm | s mm | L2 mm | L mm | L1 mm | WEIGHT |
|---------------|-----------------|----------------------------|--------------|---------|----------|---------|----------|--------|
| SDR 17 | | | | | | | | |
| 355 | 2500123 5517 | 355X21.1 SDR17 I SO S-8 | 355 | 21.1 | 424 | 300 | 464 | 19.6 |
| 400 | 2500124 0017 | 400X23.7 SDR17 I SO S-8 | 400 | 23.7 | 424 | 300 | 469 | 24.8 |
| 450 | 2500124 5017 | 450X26.7 SDR17 I SO S-8 | 450 | 26.7 | 466 | 300 | 511 | 34.5 |
| 500 | 2500125 0017 | 500X29.7 SDR17 I SO S-8 | 500 | 29.7 | 466 | 300 | 511 | 42.5 |
| SDR 11 | | | | | | | | |
| 355 | 2500123 5511 | 355X32.2 SDR11 I SO S-5 | 355 | 32.2 | 424 | 300 | 464 | 28.9 |
| 400 | 2500124 0011 | 400X36.3 SDR11 I SO S-5 | 400 | 36.3 | 424 | 300 | 469 | 36.7 |
| 450 | 2500124 5011 | 450X40.9 SDR11 I SO S-5 | 450 | 40.9 | 466 | 300 | 511 | 51.1 |

| | | | | | | | | |
|-----|-----------------|----------------------------|-----|------|-----|-----|-----|------|
| 500 | 2500125 0011 | 500X45.4 SDR11 I SO S-5 | 500 | 45.4 | 466 | 300 | 511 | 63.3 |
|-----|-----------------|----------------------------|-----|------|-----|-----|-----|------|

45° Elbow

Agruline

AGRU Code: 060 Injection Moulded Butt Weld & Socket Weld Available in PE100 Black



| DIMENSION | CODE | DETAIL | da(OD) m | s m | z m | L3 m | WEIGHT |
|---------------|-----------------|---------------------------|----------|-----|-----------|-------|--------|
| SDR 17 | | | | | | | |
| 63 | 250600063 17 | 63X3.8 SDR17 ISO S- 8 | 63 | 3.8 | 80 | 64.5 | 0.118 |
| 75 | 250600075 17 | 75X4.5 SDR17 ISO S- 8 | 75 | 4.5 | 90 | 71 | 0.187 |
| 90 | 250600090 17 | 90X5.4 SDR17 ISO S- 8 | 90 | 5.4 | 101 | 80 | 0.295 |
| 110 | 250600110 17 | 110X6.6 SDR17 ISO S -8 | 110 | 6.6 | 108 | 83 | 0.494 |
| 125 | 250600125 17 | 125X7.4 SDR17 ISO S -8 | 125 | 7.4 | 130. 5 | 99.5 | 0.718 |
| 140 | 250600140 17 | 140X8.3 SDR17 ISO S -8 | 140 | 8.3 | 134 | 99 | 0.88 |
| 160 | 250600160 17 | 160X9.5 SDR17 ISO S -8 | 160 | 9.5 | 156 | 116.5 | 1.34 |

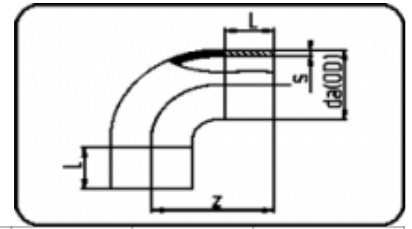
| | | | | | | | |
|---------------|-----------------|---------------------------|-----|------|-----|-------|-------|
| 180 | 250600180 17 | 180X10.7 SDR17 ISO S-8 | 180 | 10.7 | 174 | 133.5 | 2.06 |
| 200 | 250600200 17 | 200X11.9 SDR17 ISO S-8 | 200 | 11.9 | 170 | 120 | 2.28 |
| 225 | 250600225 17 | 225X13.4 SDR17 ISO S-8 | 225 | 13.4 | 184 | 128 | 3.16 |
| 250 | 250600250 17 | 250X14.8 SDR17 ISO S-8 | 250 | 14.8 | 217 | 158 | 4.82 |
| 280 | 250600280 17 | 280X16.6 SDR17 ISO S-8 | 280 | 16.6 | 236 | 174 | 6.58 |
| 315 | 250600315 17 | 315X18.7 SDR17 ISO S-8 | 315 | 18.7 | 251 | 177 | 9 |
| SDR 11 | | | | | | | |
| 20 | 250600020 11 | 20X3.0 SDR11 ISO S- 5 | 20 | 3 | 44 | 39 | 0.015 |
| 25 | 250600025 11 | 25X3.0 SDR11 ISO S- 5 | 25 | 3 | 48 | 42 | 0.02 |
| 32 | 250600032 11 | 32X3.0 SDR11 ISO S- 5 | 32 | 3 | 57 | 49 | 0.035 |
| 40 | 25060004 011 | 40X3.7 SDR11 ISO S- 5 | 40 | 3.7 | 63 | 53 | 0.057 |
| 50 | 250600050 11 | 50X4.6 SDR11 ISO S- 5 | 50 | 4.6 | 70 | 57 | 0.095 |
| 63 | 250600063 11 | 63X5.8 SDR11 ISO S- 5 | 63 | 5.8 | 80 | 65.5 | 0.172 |
| 75 | 250600075 11 | 75X6.8 SDR11 ISO S- 5 | 75 | 6.8 | 90 | 70 | 0.274 |

| | | | | | | | |
|-----|-----------------|------------------------|-----|------|-------|-------|-------|
| 90 | 250600090 11 | 90X8.2 SDR11 ISO S-5 | 90 | 8.2 | 104 | 82 | 0.44 |
| 110 | 250600110 11 | 110X10.0 SDR11 ISO S-5 | 110 | 10 | 108 | 82 | 0.679 |
| 125 | 250600125 11 | 125X11.4 SDR11 ISO S-5 | 125 | 11.4 | 132.5 | 99.5 | 1.06 |
| 140 | 250600140 11 | 140X12.7 SDR11 ISO S-5 | 140 | 12.7 | 135 | 100 | 1.4 |
| 160 | 250600160 11 | 160X14.6 SDR11 ISO S-5 | 160 | 14.6 | 156.5 | 116.5 | 2.06 |
| 180 | 250600180 11 | 180X16.4 SDR11 ISO S-5 | 180 | 16.4 | 176.5 | 131.5 | 2.86 |
| 200 | 250600200 11 | 200X18.2 SDR11 ISO S-5 | 200 | 18.2 | 167 | 122 | 3.58 |
| 225 | 250600225 11 | 225X20.5 SDR11 ISO S-5 | 225 | 20.5 | 182.5 | 125.5 | 4.76 |
| 250 | 250600250 11 | 250X22.7 SDR11 ISO S-5 | 250 | 22.7 | 217 | 158 | 6.96 |
| 280 | 250600280 11 | 280X25.4 SDR11 ISO S-5 | 280 | 25.4 | 238 | 168 | 9.31 |
| 315 | 250600315 11 | 315X28.6 SDR11 ISO S-5 | 315 | 28.6 | 248 | 176 | 12.9 |

90° Bend – 300mm

Agruline

AGRU Code: 001.6 300mm Both Sides – Injection Moulded / Welded Butt Weld & Socket Weld Available in PE100 Black

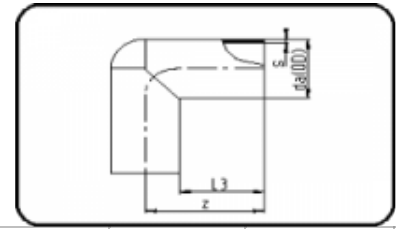


| DIMENSION | CODE | DETAIL | da(OD) m | s m | L m | z m | WEIGHT |
|---------------|-----------------|------------------------|----------|------|-----|-----|--------|
| SDR 17 | | | | | | | |
| 355 | 250016355 17 | 355X21.1 SDR17 ISO S-8 | 355 | 21.1 | 640 | 300 | 25.9 |
| 400 | 250016400 17 | 400X23.7 SDR17 ISO S-8 | 400 | 23.7 | 640 | 300 | 33.06 |
| 450 | 250016450 17 | 450X26.7 SDR17 ISO S-8 | 450 | 26.7 | 745 | 300 | 47.42 |
| 500 | 250016500 17 | 500X29.7 SDR17 ISO S-8 | 500 | 29.7 | 745 | 300 | 58.52 |
| SDR 11 | | | | | | | |
| 355 | 250016355 11 | 355X32.2 SDR11 ISO S-5 | 355 | 32.2 | 640 | 300 | 38.3 |
| 400 | 250016400 11 | 400X36.3 SDR11 ISO S-5 | 400 | 36.3 | 645 | 300 | 48.4 |
| 450 | 250016450 11 | 450X40.9 SDR11 ISO S-5 | 450 | 40.9 | 745 | 300 | 70.5 |
| 500 | 250016500 11 | 500X45.4 SDR11 ISO S-5 | 500 | 45.4 | 745 | 300 | 87.5 |

90° Elbow

Agruline

AGRU Code: 061 Injection Moulded Butt Weld & Socket Weld Available in PE100 Black

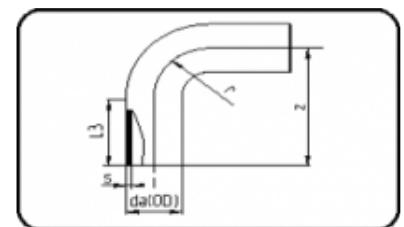


| DIMENSION | CODE | DETAIL | da(OD) m | s m | z m | L3 m | WEIGHT |
|---------------|-----------------|---------------------------|----------|------|-----|------|--------|
| SDR 17 | | | | | | | |
| 250 | 250610250 17 | 250X14.8 SDR17 ISO S-8 | 250 | 14.8 | 303 | 175 | 6.54 |
| 280 | 250610280 17 | 280X16.6 SDR17 ISO S-8 | 280 | 16.6 | 340 | 200 | 9.4 |
| 315 | 250610315 17 | 315X18.7 SDR17 ISO S-8 | 315 | 18.7 | 370 | 200 | 12.22 |
| SDR 11 | | | | | | | |
| 250 | 250610250 11 | 250X22.7 SDR11 ISO S-5 | 250 | 22.7 | 304 | 175 | 9.44 |
| 280 | 250610280 11 | 280X25.4 SDR11 ISO S-5 | 280 | 25.4 | 340 | 197 | 12.86 |
| 315 | 250610315 11 | 315X28.6 SDR11 ISO S-5 | 315 | 28.6 | 370 | 205 | 18.1 |

90° Multi Bend

Agruline

AGRU Code: 068 Injection Moulded Butt Weld & Socket Weld Available in PE100 Black



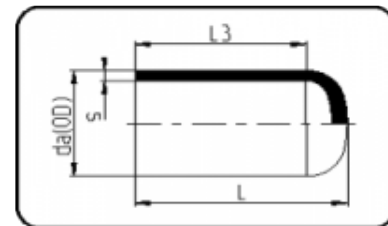
| DIMENSI ON | CODE | DETAIL | da(OD) mm | s m m | z m m | r m m | L3 m m | WEIG HT |
|-----------------------|-----------------|----------------------------|----------------------|------------------|------------------|------------------|-------------------|--------------------|
| SDR 17 | | | | | | | | |
| 63 | 2506800 6317 | 63X3.8 SDR17 ISO S-8 | 63 | 3.8 | 129. 5 | 63 | 66.5 | 0.184 |
| 75 | 25068007 517 | 75X4.5 SDR17 ISO S-8 | 75 | 4.5 | 150 | 75 | 75 | 0.302 |
| 90 | 2506800 9017 | 90X5.4 SDR17 ISO S-8 | 90 | 5.4 | 168 | 90 | 76 | 0.482 |
| 110 | 25068011 017 | 110X6.6 SDR17 IS O S-8 | 110 | 6.6 | 189 | 110 | 82 | 0.797 |
| 125 | 25068012 517 | 125X7.4 SDR17 IS O S-8 | 125 | 7.4 | 218 | 125 | 92 | 1.2 |
| 140 | 25068014 017 | 140X8.3 SDR17 IS O S-8 | 140 | 8.3 | 241 | 140 | 95 | 1.64 |
| 160 | 25068016 017 | 160X9.5 SDR17 IS O S-8 | 160 | 9.5 | 260 | 160 | 100.5 | 2.3 |
| 180 | 25068018 017 | 180X10.7 SDR17 I SO S-8 | 180 | 10.7 | 285 | 180 | 109 | 3.21 |
| 200 | 2506802 0017 | 200X11.9 SDR17 I SO S-8 | 200 | 11.9 | 318. 5 | 200 | 118.5 | 4.18 |
| 225 | 2506802 2517 | 225X13.4 SDR17 I SO S-8 | 225 | 13.4 | 353 | 225 | 125 | 5.94 |
| SDR 11 | | | | | | | | |
| 20 | 2506800 2011 | 20X2.0 SDR11 ISO S-5 | 20 | 2 | 60 | 20 | 40 | 0.014 |

| | | | | | | | | |
|-----|-----------------|----------------------------|-----|------|-----------|-----|-------|-------|
| 25 | 2506800 2511 | 25X2.3 SDR11 ISO S-5 | 25 | 2.3 | 68.5 | 25 | 42.5 | 0.024 |
| 32 | 2506800 3211 | 32X3.0 SDR11 ISO S-5 | 32 | 3 | 79 | 32 | 47 | 0.042 |
| 40 | 2506800 4011 | 40X3.7 SDR11 ISO S-5 | 40 | 3.7 | 92.5 | 40 | 52 | 0.075 |
| 50 | 2506800 5011 | 50X4.6 SDR11 ISO S-5 | 50 | 4.6 | 108. 5 | 50 | 58.5 | 0.14 |
| 63 | 2506800 6311 | 63X5.8 SDR11 ISO S-5 | 63 | 5.8 | 129. 5 | 63 | 66.5 | 0.263 |
| 75 | 25068007 511 | 75X6.8 SDR11 ISO S-5 | 75 | 6.8 | 150 | 75 | 75 | 0.416 |
| 90 | 2506800 9011 | 90X8.2 SDR11 ISO S-5 | 90 | 8.2 | 168 | 90 | 76 | 0.685 |
| 110 | 25068011 011 | 110X10.0 SDR11 IS O S-5 | 110 | 10 | 189 | 110 | 82 | 1.144 |
| 125 | 25068012 511 | 125X11.4 SDR11 IS O S-5 | 125 | 11.4 | 218 | 125 | 92 | 1.681 |
| 140 | 25068014 011 | 140X12.7 SDR11 IS O S-5 | 140 | 12.7 | 241 | 140 | 95 | 2.38 |
| 160 | 25068016 011 | 160X14.6 SDR11 I SO S-5 | 160 | 14.6 | 260 | 160 | 100.5 | 3.34 |
| 180 | 25068018 011 | 180X16.4 SDR11 I SO S-5 | 180 | 16.4 | 285 | 180 | 109 | 4.58 |
| 200 | 2506802 0011 | 200X18.2 SDR11 I SO S-5 | 200 | 18.2 | 318. 5 | 200 | 118.5 | 6.18 |
| 225 | 2506802 2511 | 225X20.5 SDR11 I SO S-5 | 225 | 20.5 | 353 | 225 | 125 | 8.52 |

End Cap

Agruline

AGRU Code: 064 Injection Moulded Butt Weld & Socket Weld Available in PE100 Black



| DIMENSION | CODE | DETAIL | da(OD) m | s m | L m | L3 m | WEIGHT |
|---------------|-----------------|---------------------------|----------|------|-------|-------|--------|
| SDR 17 | | | | | | | |
| 63 | 250640063 17 | 63X3.8 SDR17 ISO S -8 | 63 | 3.8 | 83 | 66 | 0.063 |
| 75 | 250640075 17 | 75X4.5 SDR17 ISO S- 8 | 75 | 4.5 | 88 | 75 | 0.098 |
| 90 | 25064009 017 | 90X5.4 SDR17 ISO S- 8 | 90 | 5.4 | 107 | 82 | 0.18 |
| 110 | 250640110 17 | 110X6.6 SDR17 ISO S -8 | 110 | 6.6 | 131 | 101.5 | 0.325 |
| 125 | 250640125 17 | 125X7.4 SDR17 ISO S -8 | 125 | 7.4 | 132 | 100 | 0.407 |
| 140 | 250640140 17 | 140X8.3 SDR17 ISO S-8 | 140 | 8.3 | 142 | 106 | 0.52 |
| 160 | 250640160 17 | 160X9.5 SDR17 ISO S -8 | 160 | 9.5 | 164 | 116 | 0.836 |
| 180 | 250640180 17 | 180X10.7 SDR17 ISO S-8 | 180 | 10.7 | 156 | 107 | 1.06 |
| 200 | 250640200 17 | 200X11.9 SDR17 ISO S-8 | 200 | 11.9 | 181.5 | 127 | 1.34 |

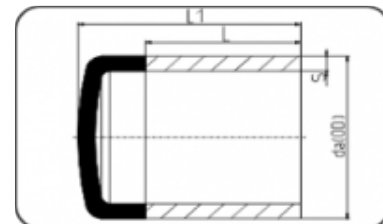
| | | | | | | | |
|---------------|-----------------|---------------------------|-----|------|------|-----|-------|
| 225 | 250640225 17 | 225X13.4 SDR17 ISO S-8 | 225 | 13.4 | 196 | 123 | 1.971 |
| 250 | 250640250 17 | 250X14.8 SDR17 ISO S-8 | 250 | 14.8 | 224 | 152 | 2.64 |
| 280 | 250640280 17 | 280X16.6 SDR17 ISO S-8 | 280 | 16.6 | 246 | 162 | 3.68 |
| 315 | 250640315 17 | 315X18.7 SDR17 ISO S-8 | 315 | 18.7 | 262 | 167 | 4.93 |
| SDR 11 | | | | | | | |
| 20 | 250640020 11 | 20X3.0 SDR11 ISO S- 5 | 20 | 3 | 46.5 | 42 | 0.008 |
| 25 | 250640025 11 | 25X3.0 SDR11 ISO S- 5 | 25 | 3 | 48 | 42 | 0.013 |
| 32 | 250640032 11 | 32X3.0 SDR11 ISO S- 5 | 32 | 3 | 54 | 45 | 0.017 |
| 40 | 25064004 011 | 40X3.7 SDR11 ISO S- 5 | 40 | 3.7 | 63 | 50 | 0.029 |
| 50 | 25064005 011 | 50X4.6 SDR11 ISO S- 5 | 50 | 4.6 | 71 | 57 | 0.051 |
| 63 | 250640063 11 | 63X5.8 SDR11 ISO S- 5 | 63 | 5.8 | 80.5 | 64 | 0.092 |
| 75 | 250640075 11 | 75X6.8 SDR11 ISO S- 5 | 75 | 6.8 | 91 | 75 | 0.149 |
| 90 | 25064009 011 | 90X8.2 SDR11 ISO S- 5 | 90 | 8.2 | 107 | 84 | 0.253 |
| 110 | 250640110 11 | 110X10.0 SDR11 ISO S-5 | 110 | 10 | 133 | 105 | 0.476 |

| | | | | | | | |
|-----|-----------------|---------------------------|-----|------|-------|-------|-------|
| 125 | 250640125 11 | 125X11.4 SDR11 ISO S-5 | 125 | 11.4 | 132 | 100 | 0.586 |
| 140 | 250640140 11 | 140X12.7 SDR11 ISO S-5 | 140 | 12.7 | 144 | 106 | 0.83 |
| 160 | 250640160 11 | 160X14.6 SDR11 ISO S-5 | 160 | 14.6 | 167.5 | 123.5 | 1.198 |
| 180 | 250640180 11 | 180X16.4 SDR11 ISO S-5 | 180 | 16.4 | 160 | 111 | 1.46 |
| 200 | 250640200 11 | 200X18.2 SDR11 ISO S-5 | 200 | 18.2 | 181.5 | 117 | 2.06 |
| 225 | 250640225 11 | 225X20.5 SDR11 ISO S-5 | 225 | 20.5 | 202.5 | 130 | 2.94 |
| 250 | 250640250 11 | 250X22.7 SDR11 ISO S-5 | 250 | 22.7 | 225 | 160 | 3.91 |
| 280 | 250640280 11 | 280X25.4 SDR11 ISO S-5 | 280 | 25.4 | 248 | 162 | 5.36 |
| 315 | 250640315 11 | 315X28.6 SDR11 ISO S-5 | 315 | 28.6 | 269 | 167 | 7.1 |

End Cap – 300mm

Agruline

AGRU Code: 004.6 300mm – Injection Moulded Butt Weld Available in PE100 Black



| DIMENSI ON | CODE | DETAIL | da(OD) m | s m | L m | L1 m | WEIGH T |
|---------------|------|--------|----------|-----|-----|------|------------|
|---------------|------|--------|----------|-----|-----|------|------------|

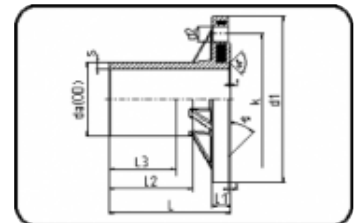
| SDR 11 | | | | | | | |
|---------------|-----------------|-----------------------------|-----|------|-----|-----|-------|
| 355 | 25004635 511 | 355 X 32.2 SDR11 ISO S-5 | 355 | 32.2 | 300 | 420 | 16.23 |
| 400 | 25004640 011 | 400 X 36.3 SDR11 ISO S-5 | 400 | 36.3 | 300 | 430 | 21.2 |
| 450 | 25004645 011 | 450 X 40.9 SDR11 ISO S-5 | 450 | 40.9 | 300 | 435 | 27.49 |
| 500 | 25004650 011 | 500 X 45.4 SDR11 ISO S-5 | 500 | 45.4 | 300 | 445 | 34.36 |

Full Faced Flange DIN

Agruline

AGRU Code: 162 Injection Moulded / Drilled PN 10/16) Butt Weld & Socket Weld Available in PE100

Black



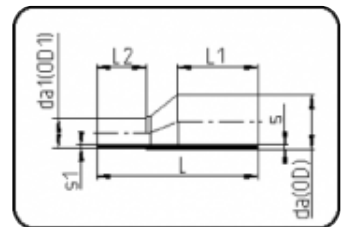
| DIMENSI ON da(O D) mm | COD E | DETAIL | da1 (OD1) mm | s m m | L m m | L1 m m | L2 m m | L3 M M | d1 m m | d2 m m | WEI GH T |
|--------------------------------------|---------------------|-------------------------------|-----------------------------|----------------------|----------------------|-----------------------|-----------------------|-----------------------|-----------------------|-----------------------|-------------------------|
| SDR 11 | | | | | | | | | | | |
| 90 | 2516 2009 011 | 90X8.2 S DR11 ISO S-5 | 8.2 | 14 2 | 22 | 98 | 80 | 20 2 | 18 | 160 | 2.0 2 |
| 110 | 2516 2011 011 | 110X10.0 SDR11 IS O S-5 | 10 | 14 6 | 22 | 98 | 80 | 22 2 | 18 | 180 | 2.4 4 |

| | | | | | | | | | | | |
|-----|---------------------|-------------------------------|------|---------|----|-----|---------|---------|----|---------|----------|
| 125 | 2516 2012 511 | 125X11.4 SDR11 IS O S-5 | 11.8 | 14 7 | 22 | 98 | 80 | 22 2 | 18 | 180 | 2.8 6 |
| 160 | 2516 2016 011 | 160X14.6 SDR11 IS O S-5 | 13.6 | 171 | 24 | 118 | 10 0 | 28 6 | 22 | 24 0 | 3.2 8 |
| 180 | 2516 2018 011 | 180X16.4 SDR11 IS O S-5 | 15.4 | 18 0 | 24 | 127 | 110 | 28 6 | 22 | 24 0 | 3.7 |

Reducer – Excentric

Agruline

AGRU Code: 069 Injection Moulded Butt Weld & Socket Weld Available in PE100 Black



| DIMENSION | CODE | DETAIL | da(OD) m | da1(OD1) m | s m | L m | L1 mm | L2 mm | s1 mm | WEIGHT |
|---------------|---------------------|-------------------------|----------|------------|-----|-----|-------|-------|-------|-----------|
| SDR 17 | | | | | | | | | | |
| 63/50 | 25069 63501 7 | 63/50 SDR 17 ISO S-8 | 63 | 50 | 3.8 | 173 | 72 | 56 | 3 | 0.11 |
| 75/50 | 25069 75501 7 | 75/50 SDR 17 ISO S-8 | 75 | 50 | 4.5 | 195 | 81 | 56 | 3 | 0.16 9 |
| 75/63 | 25069 75631 7 | 75/63 SDR1 7 ISO S-8 | 75 | 63 | 4.5 | 195 | 82 | 63 | 3.8 | 0.22 8 |

| | | | | | | | | | | |
|-------------|---------------------|---------------------------|-----|-----|-----|---------|-----------|----|-----|-----------|
| 90/63 | 25069 90631 7 | 90/63 SDR 17 ISO S-8 | 90 | 63 | 5.4 | 216 | 94 | 64 | 3.8 | 0.28 7 |
| 90/75 | 25069 90751 7 | 90/75 SDR 17 ISO S-8 | 90 | 75 | 5.4 | 219 | 95 | 70 | 4.5 | 0.34 6 |
| 110/6 3 | 25069 116317 | 110/63 SDR 17 ISO S-8 | 110 | 63 | 6.6 | 24 6 | 101 | 63 | 3.8 | 0.40 5 |
| 110/9 0 | 25069 119017 | 110/90 SDR 17 ISO S-8 | 110 | 90 | 6.6 | 241 | 96 | 79 | 5.4 | 0.46 4 |
| 125/6 3 | 25069 126317 | 125/63 SD R17 ISO S-8 | 125 | 63 | 7.4 | 26 5 | 107. 5 | 63 | 3.8 | 0.52 3 |
| 125/9 0 | 25069 12901 7 | 125/90 SD R17 ISO S-8 | 125 | 90 | 7.4 | 26 4 | 10 6.5 | 79 | 5.4 | 0.58 2 |
| 125/11 0 | 25069 121117 | 125/110 SD R17 ISO S-8 | 125 | 110 | 7.4 | 26 4 | 10 5.5 | 86 | 6.6 | 0.64 1 |
| 140/1 25 | 25069 141217 | 140/125 SD R17 ISO S-8 | 140 | 125 | 8.3 | 28 5 | 111. 5 | 93 | 7.4 | 0.7 |
| 160/9 0 | 25069 16901 7 | 160/90 SD R17 ISO S-8 | 160 | 90 | 9.5 | 310 | 117. 5 | 79 | 5.4 | 0.75 9 |
| 160/11 0 | 25069 161117 | 160/110 SD R17 ISO S-8 | 160 | 110 | 9.5 | 310 | 118. 5 | 85 | 6.6 | 0.81 8 |
| 160/1 25 | 25069 161217 | 160/125 SD R17 ISO S-8 | 160 | 125 | 9.5 | 310 | 118. 5 | 91 | 7.4 | 0.87 7 |
| 160/1 40 | 25069 161417 | 160/140 SD R17 ISO S-8 | 160 | 140 | 9.5 | 30 9 | 116. 5 | 96 | 8.3 | 0.93 6 |

| | | | | | | | | | | |
|---------------|---------------------|-------------------------------|-----|-----|----------|---------|-----------|-----------|----------|-----------|
| 180/90 | 25069 18901 7 | 180/90 SD R17 ISO S-8 | 180 | 90 | 10. 7 | 34 5 | 125 | 79 | 5.4 | 0.99 5 |
| 180/125 | 25069 181217 | 180/125 SD R17 ISO S-8 | 180 | 125 | 10. 7 | 35 3 | 13 4.5 | 92. 5 | 7.4 | 1.05 4 |
| 180/160 | 25069 181617 | 180/160 SD R17 ISO S-8 | 180 | 160 | 10. 7 | 34 0 | 131. 5 | 101. 5 | 9.5 | 1.113 |
| 200/160 | 25069 201617 | 200/160 S DR17 ISO S -8 | 200 | 160 | 11. 9 | 37 3 | 13 8.5 | 100 | 9.5 | 1.172 |
| 200/180 | 25069 20181 7 | 200/180 S DR17 ISO S -8 | 200 | 180 | 11. 9 | 37 0 | 14 2.5 | 107 | 10.7 | 1.23 1 |
| 225/160 | 25069 221617 | 225/160 S DR17 ISO S -8 | 225 | 160 | 13. 4 | 40 0 | 151. 5 | 101. 5 | 9.5 | 1.29 |
| 225/180 | 25069 22181 7 | 225/180 S DR17 ISO S -8 | 225 | 180 | 13. 4 | 40 0 | 151. 5 | 108. 5 | 10.7 | 1.34 9 |
| 225/200 | 25069 22201 7 | 225/200 S DR17 ISO S -8 | 225 | 200 | 13. 4 | 40 0 | 151. 5 | 115. 5 | 11.9 | 1.40 8 |
| 250/200 | 25069 252117 | 250/200 S DR17 ISO S -8 | 250 | 200 | 14. 8 | 44 0 | 180 | 120 | 11.9 | 1.46 7 |
| 250/225 | 25069 25221 7 | 250/225 S DR17 ISO S -8 | 250 | 225 | 14. 8 | 44 5 | 18 2.5 | 124. 5 | 13. 4 | 1.52 6 |
| SDR 11 | | | | | | | | | | |

| | | | | | | | | | | |
|-------|---------------------|-------------------------|----|----|-----|---------|----|----|-----|-----------|
| 25/20 | 25069 25201 1 | 25/20 SDR 11 ISO S-5 | 25 | 20 | 3 | 10 3 | 51 | 38 | 3 | 1.58 5 |
| 32/25 | 25069 32251 1 | 32/25 SDR 11 ISO S-5 | 32 | 25 | 3 | 114 | 56 | 40 | 3 | 1.64 4 |
| 40/25 | 25069 40251 1 | 40/25 SDR 11 ISO S-5 | 40 | 25 | 3.7 | 126 | 60 | 40 | 3 | 1.70 3 |
| 40/32 | 25069 40321 1 | 40/32 SDR 11 ISO S-5 | 40 | 32 | 3.7 | 125 | 59 | 44 | 3 | 1.76 2 |
| 50/32 | 25069 50321 1 | 50/32 SDR 11 ISO S-5 | 50 | 32 | 4.6 | 156 | 71 | 45 | 3 | 1.82 1 |
| 50/40 | 25069 50401 1 | 50/40 SDR 11 ISO S-5 | 50 | 40 | 4.6 | 157 | 71 | 49 | 3.7 | 1.88 |
| 63/32 | 25069 63321 1 | 63/32 SDR 11 ISO S-5 | 63 | 32 | 5.8 | 177 | 75 | 45 | 3 | 1.93 9 |
| 63/40 | 25069 63401 1 | 63/40 SDR 11 ISO S-5 | 63 | 40 | 5.8 | 177 | 76 | 49 | 3.7 | 1.99 8 |
| 63/50 | 25069 63501 1 | 63/50 SDR 11 ISO S-5 | 63 | 50 | 5.8 | 177 | 76 | 56 | 4.6 | 2.05 7 |
| 75/50 | 25069 75501 1 | 75/50 SDR 11 ISO S-5 | 75 | 50 | 6.8 | 195 | 82 | 57 | 4.6 | 2.11 6 |
| 75/63 | 25069 756311 | 75/63 SDR1 1 ISO S-5 | 75 | 63 | 6.8 | 197 | 83 | 63 | 5.8 | 2.17 5 |

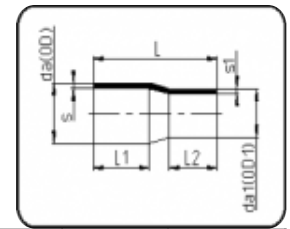
| | | | | | | | | | | |
|-------------|---------------------|---------------------------|-----|-----|----------|---------|-----------|----|------|-----------|
| 90/63 | 25069 90631 1 | 90/63 SDR 11 ISO S-5 | 90 | 63 | 8.2 | 213 | 92 | 64 | 5.8 | 2.23 4 |
| 90/75 | 25069 90751 1 | 90/75 SDR 11 ISO S-5 | 90 | 75 | 8.2 | 214 | 93 | 69 | 6.8 | 2.29 3 |
| 110/6 3 | 25069 116311 | 110/63 SDR 11 ISO S-5 | 110 | 63 | 10 | 24 4 | 99 | 63 | 5.8 | 2.35 2 |
| 110/9 0 | 25069 119011 | 110/90 SDR 11 ISO S-5 | 110 | 90 | 10 | 24 4 | 98 | 79 | 8.2 | 2.41 1 |
| 125/6 3 | 25069 126311 | 125/63 SD R11 ISO S-5 | 125 | 63 | 11. 4 | 26 8 | 105 | 63 | 5.8 | 2.47 |
| 125/9 0 | 25069 129011 | 125/90 SD R11 ISO S-5 | 125 | 90 | 11. 4 | 26 5 | 10 6.5 | 79 | 8.2 | 2.52 9 |
| 125/11 0 | 25069 121111 | 125/110 SD R11 ISO S-5 | 125 | 110 | 11. 4 | 26 0 | 103 | 87 | 10 | 2.58 8 |
| 140/1 25 | 25069 141211 | 140/125 SD R11 ISO S-5 | 140 | 125 | 12. 7 | 28 3 | 109. 5 | 95 | 11.4 | 2.64 7 |
| 160/9 0 | 25069 169011 | 160/90 SD R11 ISO S-5 | 160 | 90 | 14. 6 | 30 9 | 117. 5 | 79 | 8.2 | 2.70 6 |
| 160/11 0 | 25069 161111 | 160/110 SD R11 ISO S-5 | 160 | 110 | 14. 6 | 30 5 | 115. 5 | 87 | 10 | 2.76 5 |
| 160/1 25 | 25069 161211 | 160/125 SD R11 ISO S-5 | 160 | 125 | 14. 6 | 30 9 | 116. 5 | 91 | 11.4 | 2.82 4 |
| 160/1 40 | 25069 161411 | 160/140 SD R11 ISO S-5 | 160 | 140 | 14. 6 | 30 8 | 116. 5 | 98 | 12.7 | 2.88 3 |
| 180/9 0 | 25069 189011 | 180/90 SD R11 ISO S-5 | 180 | 90 | 16. 4 | 34 8 | 12 8.5 | 79 | 8.2 | 2.94 2 |

| | | | | | | | | | | |
|-------------|---------------------|---------------------------|-----|-----|----------|---------|-----------|-----|----------|-----------|
| 180/1 25 | 25069 181211 | 180/125 SD R11 ISO S-5 | 180 | 125 | 16. 4 | 34 5 | 130 | 93 | 11.4 | 3.00 1 |
| 180/1 60 | 25069 181611 | 180/160 SD R11 ISO S-5 | 180 | 160 | 16. 4 | 34 5 | 130 | 104 | 14. 6 | 3.06 |
| 200/1 60 | 25069 201611 | 200/160 S DR11 ISO S-5 | 200 | 160 | 18. 2 | 37 3 | 13 8.5 | 104 | 14. 6 | 3.11 9 |
| 200/1 80 | 25069 201811 | 200/180 S DR11 ISO S-5 | 200 | 180 | 18. 2 | 37 3 | 14 3.5 | 111 | 16. 4 | 3.17 8 |
| 225/1 60 | 25069 221611 | 225/160 S DR11 ISO S-5 | 225 | 160 | 20. 5 | 40 5 | 15 4.5 | 100 | 14. 6 | 3.23 7 |
| 225/1 80 | 25069 221811 | 225/180 S DR11 ISO S-5 | 225 | 180 | 20. 5 | 40 3 | 15 4.5 | 110 | 16. 4 | 3.29 6 |
| 225/2 00 | 25069 22201 1 | 225/200 S DR11 ISO S-5 | 225 | 200 | 20. 5 | 40 3 | 15 5.5 | 126 | 18. 2 | 3.35 5 |
| 250/2 00 | 25069 252111 | 250/200 S DR11 ISO S-5 | 250 | 200 | 22. 7 | 44 0 | 180 | 120 | 18. 2 | 3.41 4 |
| 250/2 25 | 25069 25221 1 | 250/225 S DR11 ISO S-5 | 250 | 225 | 22. 7 | 44 0 | 179 | 125 | 20. 5 | 3.47 3 |

Reducer Concentric

Agruline

AGRU Code: 067 Injection Moulded Butt Weld & Socket Weld Available in PE100 Black



| DIMENSION | CODE | DETAIL | da(OD) mm | da1(OD) mm | s mm | L mm | L1 mm | L2 mm | s1 mm | WEIGHT |
|---------------|---------------------|---------------------------|-----------|------------|------|-------|-------|-------|-------|--------|
| SDR 17 | | | | | | | | | | |
| 75/63 | 25067 75631 7 | 75/63 SDR1 7 ISO S-8 | 75 | 63 | 4.5 | 146 | 70 | 63 | 3.8 | 0.13 |
| 90/63 | 25067 90631 7 | 90/63 SDR 17 ISO S-8 | 90 | 63 | 5.4 | 172 | 79 | 63 | 3.8 | 0.20 |
| 90/75 | 25067 90751 7 | 90/75 SDR 17 ISO S-8 | 90 | 75 | 5.4 | 163 | 79 | 70 | 4.5 | 0.20 |
| 110/63 | 25067 116317 | 110/63 SDR 17 ISO S-8 | 110 | 63 | 6.6 | 179 | 82 | 63 | 3.8 | 0.30 |
| 110/90 | 25067 119017 | 110/90 SDR 17 ISO S-8 | 110 | 90 | 6.6 | 175 | 82 | 79 | 5.4 | 0.33 |
| 125/63 | 25067 12631 7 | 125/63 SD R17 ISO S-8 | 125 | 63 | 7.4 | 187 | 87 | 63 | 3.8 | 0.38 |
| 125/90 | 25067 12901 7 | 125/90 SD R17 ISO S-8 | 125 | 90 | 7.4 | 191.5 | 87 | 79 | 5.4 | 0.44 |
| 125/110 | 25067 121117 | 125/110 SD R17 ISO S-8 | 125 | 110 | 7.4 | 193 | 87 | 82 | 6.6 | 0.48 |
| 140/125 | 25067 141217 | 140/125 SD R17 ISO S-8 | 140 | 125 | 8.3 | 207 | 95 | 90 | 7.4 | 0.69 |

| | | | | | | | | | | |
|---------|-----------------|---------------------------|-----|-----|------|-----|-------|-------|------|------|
| 160/90 | 25067 169017 | 160/90 SD R17 ISO S-8 | 160 | 90 | 9.5 | 215 | 98 | 79 | 5.4 | 0.76 |
| 160/110 | 25067 161117 | 160/110 SD R17 ISO S-8 | 160 | 110 | 9.5 | 222 | 98 | 87.5 | 6.6 | 0.82 |
| 160/125 | 25067 161217 | 160/125 SD R17 ISO S-8 | 160 | 125 | 9.5 | 227 | 98 | 89.5 | 7.4 | 0.85 |
| 160/140 | 25067 161417 | 160/140 SD R17 ISO S-8 | 160 | 140 | 9.5 | 234 | 98 | 93.5 | 8.3 | 0.95 |
| 180/125 | 25067 181217 | 180/125 SD R17 ISO S-8 | 180 | 125 | 10.7 | 270 | 132.5 | 95 | 7.4 | 1.26 |
| 180/160 | 25067 181617 | 180/160 SD R17 ISO S-8 | 180 | 160 | 10.7 | 270 | 127 | 101 | 9.5 | 1.38 |
| 200/160 | 25067 201617 | 200/160 S DR17 ISO S-8 | 200 | 160 | 11.9 | 253 | 112 | 98.5 | 9.5 | 1.56 |
| 225/160 | 25067 221617 | 225/160 S DR17 ISO S-8 | 225 | 160 | 13.4 | 270 | 125 | 100.5 | 9.5 | 1.92 |
| 250/160 | 25067 251617 | 250/160 S DR17 ISO S-8 | 250 | 160 | 14.8 | 318 | 152 | 112 | 9.5 | 2.76 |
| 250/200 | 25067 252117 | 250/200 S DR17 ISO S-8 | 250 | 200 | 14.8 | 317 | 152 | 124 | 11.9 | 3.06 |
| 250/225 | 25067 252217 | 250/225 S DR17 ISO S-8 | 250 | 225 | 14.8 | 312 | 150 | 132 | 13.4 | 3.34 |
| 280/250 | 25067 282517 | 280/250 S DR17 ISO S-8 | 280 | 250 | 16.6 | 355 | 160 | 156 | 14.8 | 4.52 |

| | | | | | | | | | | |
|---------------|---------------------|-------------------------------|-----|-----|----------|---------|-----|-----|----------|------|
| 315/200 | 25067 31201 7 | 315/200 S DR17 ISO S -8 | 315 | 200 | 18. 7 | 37 5 | 173 | 134 | 11.9 | 5.40 |
| 315/225 | 25067 312217 | 315/225 SD R17 ISO S-8 | 315 | 225 | 18. 7 | 37 5 | 168 | 132 | 13. 4 | 5.54 |
| 315/250 | 25067 312517 | 315/250 S DR17 ISO S -8 | 315 | 250 | 18. 7 | 37 5 | 173 | 154 | 14. 8 | 5.72 |
| SDR 11 | | | | | | | | | | |
| 25/20 | 25067 25201 1 | 25/20 SDR 11 ISO S-5 | 25 | 20 | 3 | 87 | 41 | 41 | 3 | 0.02 |
| 32/20 | 25067 32201 1 | 32/20 SDR 11 ISO S-5 | 32 | 20 | 3 | 95 | 44 | 41 | 3 | 0.02 |
| 32/25 | 25067 32251 1 | 32/25 SDR 11 ISO S-5 | 32 | 25 | 3 | 95 | 44 | 41 | 3 | 0.02 |
| 40/20 | 25067 40201 1 | 40/20 SDR 11 ISO S-5 | 40 | 20 | 3.7 | 102 | 49 | 41 | 3 | 0.03 |
| 40/25 | 25067 40251 1 | 40/25 SDR 11 ISO S-5 | 40 | 25 | 3.7 | 102 | 49 | 41 | 3 | 0.03 |
| 40/32 | 25067 40321 1 | 40/32 SDR 11 ISO S-5 | 40 | 32 | 3.7 | 101 | 49 | 44 | 3 | 0.04 |
| 50/25 | 25067 50251 1 | 50/25 SDR 11 ISO S-5 | 50 | 25 | 4.6 | 118 | 55 | 43 | 3 | 0.05 |

| | | | | | | | | | | |
|--------|---------------------|--------------------------|-----|----|-----|-----|----|----|-----|------|
| 50/32 | 25067 50321 1 | 50/32 SDR 11 ISO S-5 | 50 | 32 | 4.6 | 118 | 58 | 45 | 3 | 0.06 |
| 50/40 | 25067 50401 1 | 50/40 SDR 11 ISO S-5 | 50 | 40 | 4.6 | 126 | 56 | 49 | 3.7 | 0.07 |
| 63/32 | 25067 63321 1 | 63/32 SDR 11 ISO S-5 | 63 | 32 | 5.8 | 135 | 63 | 48 | 3 | 0.10 |
| 63/40 | 25067 63401 1 | 63/40 SDR 11 ISO S-5 | 63 | 40 | 5.8 | 129 | 63 | 49 | 3.7 | 0.10 |
| 63/50 | 25067 63501 1 | 63/50 SDR 11 ISO S-5 | 63 | 50 | 5.8 | 148 | 63 | 58 | 4.6 | 0.13 |
| 75/50 | 25067 75501 1 | 75/50 SDR 11 ISO S-5 | 75 | 50 | 6.8 | 148 | 70 | 57 | 4.6 | 0.17 |
| 75/63 | 25067 75631 1 | 75/63 SDR1 11 ISO S-5 | 75 | 63 | 6.8 | 148 | 70 | 63 | 5.8 | 0.19 |
| 90/63 | 25067 90631 1 | 90/63 SDR 11 ISO S-5 | 90 | 63 | 8.2 | 172 | 79 | 63 | 5.8 | 0.29 |
| 90/75 | 25067 90751 1 | 90/75 SDR 11 ISO S-5 | 90 | 75 | 8.2 | 163 | 79 | 70 | 6.8 | 0.29 |
| 110/40 | 25067 114011 | 110/40 SDR 11 ISO S-5 | 110 | 40 | 10 | 180 | 82 | 50 | 3.7 | 0.36 |
| 110/63 | 25067 116311 | 110/63 SDR 11 ISO S-5 | 110 | 63 | 10 | 178 | 82 | 63 | 5.8 | 0.43 |

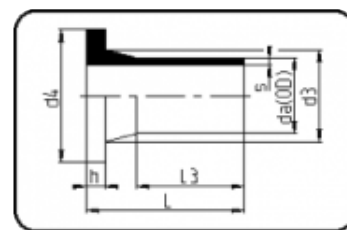
| | | | | | | | | | | |
|---------|-----------------|---------------------------|-----|-----|------|-----|-------|-------|------|------|
| 110/90 | 25067 119011 | 110/90 SDR 11 ISO S-5 | 110 | 90 | 10 | 177 | 82 | 79 | 8.2 | 0.50 |
| 125/63 | 25067 126311 | 125/63 SD R11 ISO S-5 | 125 | 63 | 11.4 | 195 | 87 | 63 | 5.8 | 0.56 |
| 125/90 | 25067 129011 | 125/90 SD R11 ISO S-5 | 125 | 90 | 11.4 | 200 | 87.5 | 79 | 8.2 | 0.64 |
| 125/110 | 25067 121111 | 125/110 SD R11 ISO S-5 | 125 | 110 | 11.4 | 200 | 87.5 | 82 | 10 | 0.74 |
| 140/125 | 25067 141211 | 140/125 SD R11 ISO S-5 | 140 | 125 | 12.7 | 211 | 94.5 | 88.5 | 11.4 | 0.99 |
| 160/90 | 25067 169011 | 160/90 SD R11 ISO S-5 | 160 | 90 | 14.6 | 217 | 100.5 | 79 | 8.2 | 1.06 |
| 160/110 | 25067 161111 | 160/110 SD R11 ISO S-5 | 160 | 110 | 14.6 | 225 | 98 | 85.5 | 10 | 1.18 |
| 160/125 | 25067 161211 | 160/125 SD R11 ISO S-5 | 160 | 125 | 14.6 | 231 | 98 | 89.5 | 11.4 | 1.32 |
| 160/140 | 25067 161411 | 160/140 SD R11 ISO S-5 | 160 | 140 | 14.6 | 229 | 98 | 92 | 12.7 | 1.36 |
| 180/125 | 25067 181211 | 180/125 SD R11 ISO S-5 | 180 | 125 | 16.4 | 270 | 129.5 | 94.5 | 11.4 | 1.82 |
| 180/160 | 25067 181611 | 180/160 SD R11 ISO S-5 | 180 | 160 | 16.4 | 276 | 129.5 | 105.5 | 14.6 | 2.11 |
| 200/160 | 25067 201611 | 200/160 S DR11 ISO S-5 | 200 | 160 | 18.2 | 252 | 112 | 98.5 | 14.6 | 2.27 |
| 225/160 | 25067 221611 | 225/160 S DR11 ISO S-5 | 225 | 160 | 20.5 | 270 | 125.5 | 99.5 | 14.6 | 2.90 |

| | | | | | | | | | | |
|---------|-----------------|---------------------------|-----|-----|------|-----|-------|-------|------|------|
| 250/160 | 25067 251611 | 250/160 S DR11 ISO S-5 | 250 | 160 | 22.7 | 314 | 153.5 | 111.5 | 14.6 | 3.98 |
| 250/200 | 25067 252111 | 250/200 S DR11 ISO S-5 | 250 | 200 | 22.7 | 314 | 153.5 | 123.5 | 18.2 | 4.44 |
| 250/225 | 25067 252211 | 250/225 S DR11 ISO S-5 | 250 | 225 | 22.7 | 315 | 153 | 131.5 | 20.5 | 4.74 |
| 280/250 | 25067 282511 | 280/250 S DR11 ISO S-5 | 280 | 250 | 25.4 | 355 | 163.5 | 153.5 | 22.7 | 6.64 |
| 315/200 | 25067 312011 | 315/200 S DR11 ISO S-5 | 315 | 200 | 28.6 | 375 | 177.5 | 131.5 | 18.2 | 7.48 |
| 315/225 | 25067 312211 | 315/225 SD R11 ISO S-5 | 315 | 225 | 28.6 | 375 | 170.5 | 131.5 | 20.5 | 7.84 |
| 315/250 | 25067 312511 | 315/250 S DR11 ISO S-5 | 315 | 250 | 28.6 | 375 | 173.5 | 153.5 | 22.7 | 8.32 |

Stub Flange – AS4087 & AS2129

Agruline

AGRU Code: 062 Injection Moulded Butt Weld & Socket Weld Available in PE100 Black



| DIMENSION | CODE | DETAIL | da(0) mm | s mm | L mm | L3 mm | d3 mm | d4 mm | h mm | WEIGHT |
|-----------|------|--------|----------|------|------|-------|-------|-------|------|--------|
|-----------|------|--------|----------|------|------|-------|-------|-------|------|--------|

| SDR 17 | | | | | | | | | | |
|---------------|-----------------|--------------------------------|-----|----------|---------|-----------|-----|-----|----|------|
| 63 | 25062 406317 | 63X3.8 SDR 17 ISO S-8 | 63 | 3.8 | 121 | 78 | 75 | 102 | 14 | 0.18 |
| 75 | 25062 407517 | 75X4.5 SDR1 7 ISO S-8 | 75 | 4.5 | 125 | 85. 5 | 89 | 122 | 16 | 0.27 |
| 90 | 25062 409017 | 90X5.4 SDR 17 ISO S-8 | 90 | 5.4 | 140 | 100 | 105 | 138 | 17 | 0.36 |
| 110 | 25062 011017 | 110X6.6 SDR 17 ISO S-8 | 110 | 6.6 | 158 | 113 | 125 | 158 | 18 | 0.45 |
| 125 | 25062 012517 | 125X7.4 SDR 17 ISO S-8 | 125 | 7.4 | 167 | 125 | 132 | 158 | 18 | 0.54 |
| 140 | 25062 014017 | 140X8.3 SD R17 ISO S-8 | 140 | 8.3 | 180 | 127 | 155 | 188 | 18 | 0.63 |
| 160 | 25062 016017 | 160X9.5 SD R17 ISO S-8 | 160 | 9.5 | 198 | 143 | 175 | 212 | 18 | 0.72 |
| 180 | 25062 018017 | 180X10.7 SD R17 ISO S-8 | 180 | 10. 7 | 210 | 163. 5 | 183 | 212 | 20 | 0.81 |
| 200 | 25062 020017 | 200X11.9 SD R17 ISO S-8 | 200 | 11.9 | 210 | 143 | 232 | 268 | 24 | 0.91 |
| 225 | 25062 022517 | 225X13.4 SD R17 ISO S-8 | 220 | 13. 4 | 210 | 154 | 235 | 268 | 24 | 1.00 |
| 250 | 25062 425017 | 250X14.8 S DR17 ISO S- 8 | 240 | 14. 8 | 20 4 | 132 | 285 | 320 | 25 | 1.09 |
| 280 | 25062 428017 | 280X16.6 S DR17 ISO S- 8 | 260 | 16. 6 | 218 | 145 | 291 | 320 | 25 | 1.18 |

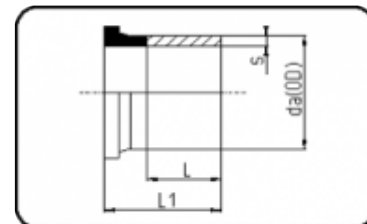
| | | | | | | | | | | |
|---------------|---------------------|--------------------------------|-----|----------|---------|-----|-----|-----|----|------|
| 315 | 25062 431517 | 315X18.7 SD R17 ISO S-8 | 280 | 18. 7 | 219 | 154 | 335 | 370 | 25 | 1.27 |
| 355 | 25062 035517 | 355X21.1 SD R17 ISO S-8 | 300 | 21.1 | 25 5 | 178 | 373 | 430 | 30 | 1.36 |
| 400 | 25062 04001 7 | 400X23.7 S DR17 ISO S- 8 | 320 | 23. 7 | 26 5 | 186 | 427 | 482 | 33 | 1.45 |
| SDR 11 | | | | | | | | | | |
| 20 | 25062 002011 | 20X3.0 SDR 11 ISO S-5 | 340 | 3 | 88 | 64 | 27 | 45 | 7 | 0.03 |
| 25 | 25062 002511 | 25X3.0 SDR 11 ISO S-5 | 360 | 3 | 86 | 64 | 33 | 58 | 9 | 0.04 |
| 32 | 25062 003211 | 32X3.0 SDR 11 ISO S-5 | 380 | 3 | 89 | 61 | 40 | 68 | 10 | 0.06 |
| 40 | 25062 004011 | 40X3.7 SDR1 1 ISO S-5 | 400 | 3.7 | 100 | 65 | 50 | 78 | 11 | 0.09 |
| 50 | 25062 005011 | 50X4.6 SDR 11 ISO S-5 | 420 | 4.6 | 101 | 69 | 61 | 88 | 12 | 0.13 |
| 63 | 25062 406311 | 63X5.8 SDR 11 ISO S-5 | 440 | 5.8 | 122 | 78 | 75 | 102 | 14 | 0.22 |
| 75 | 25062 407511 | 75X6.8 SDR1 1 ISO S-5 | 460 | 6.8 | 125 | 86 | 89 | 122 | 16 | 0.31 |
| 90 | 25062 409011 | 90X8.2 SDR 11 ISO S-5 | 480 | 8.2 | 140 | 101 | 105 | 138 | 17 | 0.45 |
| 110 | 25062 011011 | 110X10.0 SD R11 ISO S-5 | 500 | 10 | 159 | 115 | 125 | 158 | 18 | 0.73 |
| 125 | 25062 012511 | 125X11.4 SD R11 ISO S-5 | 520 | 11.4 | 169 | 122 | 132 | 158 | 25 | 0.89 |

| | | | | | | | | | | |
|-----|-----------------|----------------------------|-----|----------|---------|-----------|-----|-----|----|-----------|
| 140 | 25062 014011 | 140X12.7 SD R11 ISO S-5 | 540 | 12. 7 | 188 | 128. 5 | 155 | 188 | 25 | 1.30 |
| 160 | 25062 016011 | 160X14.6 SD R11 ISO S-5 | 560 | 14. 6 | 20 0 | 148 | 175 | 212 | 25 | 1.76 |
| 180 | 25062 018011 | 180X16.4 SD R11 ISO S-5 | 580 | 16. 4 | 20 9 | 155 | 183 | 212 | 30 | 2.04 |
| 200 | 25062 020011 | 200X18.2 S DR11 ISO S-5 | 600 | 18. 2 | 210 | 140 | 232 | 268 | 32 | 3.22 |
| 225 | 25062 022511 | 225X20.5 S DR11 ISO S-5 | 620 | 20. 5 | 210 | 145 | 235 | 268 | 32 | 3.32 |
| 250 | 25062 425011 | 250X22.7 S DR11 ISO S-5 | 640 | 22. 7 | 20 4 | 132 | 285 | 320 | 35 | 4.70 |
| 280 | 25062 428011 | 280X25.4 S DR11 ISO S-5 | 660 | 25. 4 | 218 | 145 | 291 | 320 | 35 | 5.20 |
| 315 | 25062 431511 | 315X28.6 SD R11 ISO S-5 | 680 | 28. 6 | 23 8 | 154 | 335 | 370 | 35 | 7.58 |
| 355 | 25062 035511 | 355X32.2 S DR11 ISO S-5 | 700 | 32. 2 | 257 | 176 | 373 | 430 | 40 | 10.6 4 |
| 400 | 25062 040011 | 400X36.3 S DR11 ISO S-5 | 720 | 36. 3 | 274 | 185 | 427 | 482 | 46 | 14.4 2 |

Stub Flange – AS4087 & AS2129 – 300mm

Agruline

AGRU Code: 012.6 300mm – Injection Moulded/Welded Butt Weld & Socket Weld Available in PE100
Black

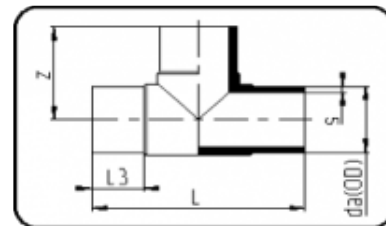


| DIMENSION | CODE | DETAIL | da(OD) m | s m | L m | L1 m | WEIGHT |
|---------------|-----------------|---------------------------|----------|------|-----|------|--------|
| SDR 17 | | | | | | | |
| 450 | 250126450 17 | 450X26.7 SDR17 ISO S-8 | 450 | 26.7 | 300 | 470 | 22.84 |
| 500 | 250126500 17 | 500X29.7 SDR17 ISO S-8 | 500 | 29.7 | 300 | 470 | 24.48 |
| 560 | 250126560 17 | 560X33.2 SDR17 ISO S-8 | 560 | 33.2 | 300 | 475 | 32.98 |
| 630 | 250126630 17 | 630X37.4 SDR17 ISO S-8 | 630 | 37.4 | 300 | 480 | 36.5 |
| SDR 11 | | | | | | | |
| 450 | 250126450 11 | 450X40.9 SDR11 ISO S-5 | 450 | 40.9 | 300 | 466 | 31.8 |
| 500 | 250126500 11 | 500X45.4 SDR11 ISO S-5 | 500 | 45.4 | 300 | 475 | 35 |
| 560 | 250126560 11 | 560X50.8 SDR11 ISO S-5 | 560 | 50.8 | 300 | 480 | 47.3 |
| 630 | 250126630 11 | 630X57.2 SDR11 ISO S-5 | 630 | 57.2 | 300 | 475 | 53 |

Tee

Agruline

AGRU Code: 066 Injection Moulded Butt Weld & Socket Weld Available in PE100 Black



| DIMENSI ON | CODE | DETAIL | da(OD) mm | s m m | z m m | L m m | L3 m m | WEIG HT |
|---------------|-----------------|----------------------------|--------------|----------|-----------|----------|-----------|------------|
| SDR 17 | | | | | | | | |
| 63 | 2506600 6317 | 63X3.8 SDR17 ISO S-8 | 63 | 3.8 | 113 | 222 | 63 | 0.285 |
| 75 | 25066007 517 | 75X4.5 SDR17 ISO S-8 | 75 | 4.5 | 131 | 258 | 70 | 0.478 |
| 90 | 2506600 9017 | 90X5.4 SDR17 ISO S-8 | 90 | 5.4 | 140 | 280 | 79 | 0.696 |
| 110 | 25066011 017 | 110X6.6 SDR17 IS O S-8 | 110 | 6.6 | 156 | 313 | 84 | 1.154 |
| 125 | 25066012 517 | 125X7.4 SDR17 IS O S-8 | 125 | 7.4 | 174 | 350 | 90 | 1.68 |
| 140 | 25066014 017 | 140X8.3 SDR17 IS O S-8 | 140 | 8.3 | 190 | 380 | 95 | 2.12 |
| 160 | 25066016 017 | 160X9.5 SDR17 IS O S-8 | 160 | 9.5 | 204. 5 | 401 | 98 | 3 |
| 180 | 25066018 017 | 180X10.7 SDR17 I SO S-8 | 180 | 10.7 | 260 | 521 | 134 | 5.22 |
| 200 | 2506602 0017 | 200X11.9 SDR17 I SO S-8 | 200 | 11.9 | 246 | 492 | 112 | 6.14 |

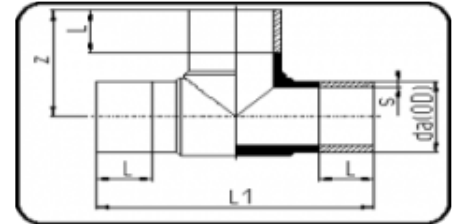
| | | | | | | | | |
|---------------|-----------------|----------------------------|-----|------|------|-----|------|-------|
| 225 | 2506602 2517 | 225X13.4 SDR17 I SO S-8 | 225 | 13.4 | 270 | 540 | 120 | 8.12 |
| 250 | 2506602 5017 | 250X14.8 SDR17 I SO S-8 | 250 | 14.8 | 314 | 624 | 146 | 11.56 |
| 280 | 2506602 8017 | 280X16.6 SDR17 I SO S-8 | 280 | 16.6 | 347 | 694 | 158 | 15.5 |
| 315 | 25066031 517 | 315X18.7 SDR17 IS O S-8 | 315 | 18.7 | 375 | 750 | 166 | 21.14 |
| 355 | 2506603 5517 | 355X21.1 SDR17 I SO S-8 | 355 | 21.1 | 440 | 880 | 188 | 32.3 |
| 400 | 2506604 0017 | 400X23.7 SDR17 I SO S-8 | 400 | 23.7 | 470 | 940 | 200 | 41.28 |
| SDR 11 | | | | | | | | |
| 20 | 2506600 2011 | 20X3.0 SDR11 ISO S-5 | 20 | 3 | 54.5 | 107 | 34.5 | 0.029 |
| 25 | 2506600 2511 | 25X3.0 SDR11 ISO S-5 | 25 | 3 | 59 | 117 | 39 | 0.04 |
| 32 | 2506600 3211 | 32X3.0 SDR11 ISO S-5 | 32 | 3 | 71 | 144 | 44 | 0.067 |
| 40 | 2506600 4011 | 40X3.7 SDR11 ISO S-5 | 40 | 3.7 | 84 | 165 | 50 | 0.117 |
| 50 | 2506600 5011 | 50X4.6 SDR11 ISO S-5 | 50 | 4.6 | 95 | 189 | 56 | 0.199 |
| 63 | 2506600 6311 | 63X5.8 SDR11 ISO S-5 | 63 | 5.8 | 114 | 226 | 64 | 0.39 |
| 75 | 25066007 511 | 75X6.8 SDR11 ISO S-5 | 75 | 6.8 | 128 | 260 | 70 | 0.639 |

| | | | | | | | | |
|-----|-----------------|----------------------------|-----|------|-----------|-----|------|-------|
| 90 | 2506600 9011 | 90X8.2 SDR11 ISO S-5 | 90 | 8.2 | 143 | 286 | 79 | 0.966 |
| 110 | 25066011 011 | 110X10.0 SDR11 IS O S-5 | 110 | 10 | 158 | 317 | 85 | 1.547 |
| 125 | 25066012 511 | 125X11.4 SDR11 IS O S-5 | 125 | 11.4 | 177 | 356 | 91 | 2.24 |
| 140 | 25066014 011 | 140X12.7 SDR11 IS O S-5 | 140 | 12.7 | 190 | 380 | 96.5 | 2.88 |
| 160 | 25066016 011 | 160X14.6 SDR11 I SO S-5 | 160 | 14.6 | 202. 5 | 405 | 99 | 4.1 |
| 180 | 25066018 011 | 180X16.4 SDR11 I SO S-5 | 180 | 16.4 | 260 | 521 | 136 | 6.9 |
| 200 | 2506602 0011 | 200X18.2 SDR11 I SO S-5 | 200 | 18.2 | 245 | 490 | 112 | 7.92 |
| 225 | 2506602 2511 | 225X20.5 SDR11 I SO S-5 | 225 | 20.5 | 271 | 548 | 124 | 10.85 |
| 250 | 2506602 5011 | 250X22.7 SDR11 I SO S-5 | 250 | 22.7 | 310 | 622 | 147 | 15.06 |
| 280 | 2506602 8011 | 280X25.4 SDR11 I SO S-5 | 280 | 25.4 | 347 | 694 | 158 | 20.86 |
| 315 | 25066031 511 | 315X28.6 SDR11 I SO S-5 | 315 | 28.6 | 375 | 752 | 168 | 28.46 |
| 355 | 2506603 5511 | 355X32.2 SDR11 I SO S-5 | 355 | 32.2 | 437 | 874 | 188 | 42.68 |
| 400 | 2506604 0011 | 400X36.3 SDR11 I SO S-5 | 400 | 36.3 | 470 | 940 | 198 | 56.46 |

Tee

Agruline

AGRU Code: 006.6 300mm Both Sides – Injection Moulded / Welded Butt Weld & Socket Weld Available in PE100 Black

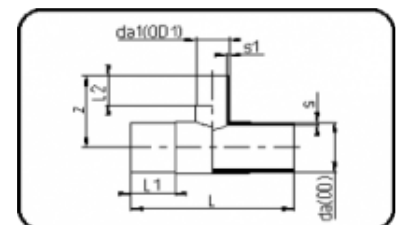


| DIMENSION | CODE | DETAIL | da(OD) mm | s mm | z mm | L mm | L1 mm | WEIGHT |
|-----------|-----------------|----------------------------|--------------|---------|---------|---------|----------|--------|
| SDR 17 | | | | | | | | |
| 450 | 2500664 5017 | 450X26.7 SDR17 I SO S-8 | 450 | 26.7 | 745 | 300 | 1.49 | 78.52 |
| 500 | 2500665 0017 | 500X29.7 SDR17 I SO S-8 | 500 | 29.7 | 745 | 300 | 1.49 | 93.5 |
| SDR 11 | | | | | | | | |
| 450 | 2500664 5011 | 450X40.9 SDR11 I SO S-5 | 450 | 40.9 | 750 | 300 | 1.5 | 113 |
| 500 | 2500665 0011 | 500X45.4 SDR11 I SO S-5 | 500 | 45.4 | 750 | 300 | 1.5 | 132 |

Tee Reduced

Agruline

AGRU Code: 065 Injection Moulded Butt Weld & Socket Weld Available in PE100 Black



| DIME NSIO N | COD E | DETAIL | da(0 D) m m | da1(0 D1) m m | s m m | z m m | L m m | L1 m m | L2 m m | s1 | WEI GH T |
|----------------------------|---------------------|------------------------------|----------------------------|------------------------------|----------------------|----------------------|----------------------|-----------------------|-----------------------|-----------|-------------------------|
| SDR 17 | | | | | | | | | | | |
| 63/5 0 | 2506 5635 017 | 63/50 SD R17 ISO S -8 | 63 | 50 | 3.8 | 10 0 | 21 3 | 60 | 56 | 3 | 0.2 27 |
| 75/5 0 | 2506 5755 017 | 75/50 SD R17 ISO S -8 | 75 | 50 | 4.5 | 111 | 26 0 | 72. 5 | 56 | 3 | 0.4 |
| 75/6 3 | 2506 5756 317 | 75/63 SD R17 ISO S -8 | 75 | 63 | 4.5 | 117 | 25 5 | 70 | 63 | 3. 8 | 0.4 42 |
| 90/6 3 | 2506 5906 317 | 90/63 SD R17 ISO S -8 | 90 | 63 | 5.4 | 13 7 | 26 4 | 79 | 66 | 3. 8 | 0.5 77 |
| 90/7 5 | 2506 5907 517 | 90/75 SD R17 ISO S -8 | 90 | 75 | 5.4 | 13 8 | 27 2 | 73 | 68 | 4. 5 | 0.5 94 |
| 110/6 3 | 2506 51163 17 | 110/63 SD R17 ISO S -8 | 110 | 63 | 6.6 | 15 6.5 | 30 5 | 86. 5 | 65 | 3. 8 | 0.97 3 |
| 110/7 5 | 2506 51175 17 | 110/75 SD R17 ISO S -8 | 110 | 75 | 6.6 | 15 2 | 30 7 | 83 | 68 | 4. 5 | 0.8 94 |
| 110/9 0 | 2506 51190 17 | 110/90 S DR17 ISO S-8 | 110 | 90 | 6.6 | 15 5 | 31 2 | 84 | 79 | 5. 4 | 0.9 39 |
| 125/6 3 | 2506 5126 317 | 125/63 S DR17 ISO S-8 | 125 | 63 | 7.4 | 17 0 | 35 0 | 110 | 70 | 3. 8 | 1.42 |

| | | | | | | | | | | | |
|---------|---------------------|------------------------------|-----|-----|----------|-----------|---------|---------|----------|---------|-----------|
| 125/90 | 2506 5129 017 | 125/90 S DR17 ISO S-8 | 125 | 90 | 7.4 | 17 0 | 34 8 | 109 | 83. 5 | 5. 4 | 1.36 |
| 125/110 | 2506 51211 17 | 125/110 S DR17 ISO S-8 | 125 | 110 | 7.4 | 167 | 34 0 | 90 | 83 | 6. 6 | 1.38 5 |
| 160/63 | 2506 5166 317 | 160/63 S DR17 ISO S-8 | 160 | 63 | 9.5 | 17 2.5 | 34 0 | 97 | 67 | 3. 8 | 1.98 |
| 160/75 | 2506 51675 17 | 160/75 S DR17 ISO S-8 | 160 | 75 | 9.5 | 17 9 | 34 4 | 101 | 76 | 4. 5 | 1.92 |
| 160/90 | 2506 5169 017 | 160/90 S DR17 ISO S-8 | 160 | 90 | 9.5 | 177 | 34 3 | 10 0 | 80 | 5. 4 | 2 |
| 160/110 | 2506 51611 17 | 160/110 S DR17 ISO S-8 | 160 | 110 | 9.5 | 20 0 | 39 4 | 10 0 | 86 | 6. 6 | 2.4 8 |
| 180/90 | 2506 5189 017 | 180/90 S DR17 ISO S-8 | 180 | 90 | 10. 7 | 20 0 | 42 0 | 136 | 97 | 5. 4 | 3.2 |
| 180/160 | 2506 51816 17 | 180/160 SDR17 IS O S-8 | 180 | 160 | 10. 7 | 20 4 | 41 2 | 105 | 94 | 9. 5 | 3.4 8 |
| 200/63 | 2506 5206 317 | 200/63 S DR17 ISO S-8 | 200 | 63 | 11. 9 | 22 5 | 55 0 | 134 | 80 | 3. 8 | 5.2 2 |
| 200/90 | 2506 5209 017 | 200/90 S DR17 ISO S-8 | 200 | 90 | 11. 9 | 22 5 | 55 0 | 134 | 95 | 5. 4 | 5.2 2 |

| | | | | | | | | | | | |
|-------------|---------------------|------------------------------|-----|-----|----------|---------|---------|-----|-----|--------------|-----------|
| 200/ 110 | 2506 52011 17 | 200/110 SDR17 IS O S-8 | 200 | 110 | 11. 9 | 24 0 | 55 0 | 134 | 103 | 6. 6 | 5.3 6 |
| 200/ 125 | 2506 5201 217 | 200/125 SDR17 IS O S-8 | 200 | 125 | 11. 9 | 24 5 | 55 0 | 134 | 110 | 7. 4 | 5.4 |
| 200/ 160 | 2506 5201 617 | 200/160 SDR17 IS O S-8 | 200 | 160 | 11. 9 | 27 0 | 55 0 | 134 | 114 | 9. 5 | 6.4 4 |
| 225/ 75 | 2506 5227 517 | 225/75 S DR17 ISO S-8 | 225 | 75 | 13. 4 | 22 6 | 44 0 | 120 | 75 | 4. 5 | 4.9 8 |
| 225/ 90 | 2506 5229 017 | 225/90 S DR17 ISO S-8 | 225 | 90 | 13. 4 | 22 4 | 44 0 | 120 | 79 | 5. 4 | 5.1 |
| 225/1 10 | 2506 52211 17 | 225/110 S DR17 ISO S-8 | 225 | 110 | 13. 4 | 22 6 | 43 9 | 120 | 85 | 6. 6 | 5.0 4 |
| 225/1 60 | 2506 5221 617 | 225/160 SDR17 IS O S-8 | 225 | 160 | 13. 4 | 24 6 | 48 6 | 120 | 98 | 9. 5 | 6.2 4 |
| 225/1 80 | 2506 5221 817 | 225/180 SDR17 IS O S-8 | 225 | 180 | 13. 4 | 28 0 | 55 4 | 132 | 135 | 1 0. 7 | 7.26 |
| 250/1 10 | 2506 52511 17 | 250/110 S DR17 ISO S-8 | 250 | 110 | 14. 8 | 24 5 | 62 5 | 148 | 86 | 6. 6 | 9.9 8 |
| 250/1 60 | 2506 5251 617 | 250/160 SDR17 IS O S-8 | 250 | 160 | 14. 8 | 27 0 | 62 5 | 148 | 100 | 9. 5 | 10.4 2 |

| | | | | | | | | | | | |
|---------------|---------------------|------------------------------|-----|-----|----------|-----------|---------|-----|-----------|----------|-----------|
| 250/ 200 | 2506 5252 017 | 250/200 SDR17 IS O S-8 | 250 | 200 | 14. 8 | 29 0 | 62 5 | 148 | 116 | 11. 9 | 11.0 6 |
| 315/9 0 | 2506 5319 017 | 315/90 S DR17 ISO S-8 | 315 | 90 | 18. 7 | 29 0 | 54 5 | 170 | 90 | 5. 4 | 11.8 |
| 315/1 10 | 2506 53111 17 | 315/110 S DR17 ISO S-8 | 315 | 110 | 18. 7 | 29 0 | 54 6 | 170 | 100 | 6. 6 | 11.7 6 |
| 315/1 60 | 2506 53116 17 | 315/160 S DR17 ISO S-8 | 315 | 160 | 18. 7 | 31 0 | 57 5 | 170 | 120 | 9. 5 | 12.8 |
| 315/2 00 | 2506 5312 017 | 315/200 SDR17 IS O S-8 | 315 | 200 | 18. 7 | 33 1 | 64 0 | 170 | 12 9.5 | 11. 9 | 14.9 |
| 315/2 25 | 2506 5312 217 | 315/225 SDR17 IS O S-8 | 315 | 225 | 18. 7 | 33 5 | 63 8 | 170 | 145 | 13. 4 | 14.7 2 |
| 315/2 50 | 2506 5312 517 | 315/250 SDR17 IS O S-8 | 315 | 250 | 18. 7 | 33 3 | 67 0 | 170 | 150 | 14. 8 | 15.6 6 |
| SDR 11 | | | | | | | | | | | |
| 63/5 0 | 2506 5635 011 | 63/50 SD R11 ISO S -5 | 63 | 50 | 5.8 | 10 2.5 | 21 6 | 60 | 56 | 4. 6 | 0.31 8 |
| 75/3 2 | 2506 5753 211 | 75/32 SD R11 ISO S -5 | 75 | 32 | 6.8 | 10 6 | 25 8 | 70 | 46 | 3 | 0.5 08 |
| 75/5 0 | 2506 5755 011 | 75/50 SD R11 ISO S -5 | 75 | 50 | 6.8 | 110 | 25 7 | 70 | 56 | 4. 6 | 0.5 41 |

| | | | | | | | | | | | |
|-------------|---------------------|------------------------------|-----|-----|----------|---------|---------|----------|----|---------|-----------|
| 75/6 3 | 2506 5756 311 | 75/63 SD R11 ISO S -5 | 75 | 63 | 6.8 | 117 | 25 2 | 70 | 63 | 5. 8 | 0.5 52 |
| 90/6 3 | 2506 5906 311 | 90/63 SD R11 ISO S -5 | 90 | 63 | 8.2 | 13 6 | 26 6 | 79 | 64 | 5. 8 | 0.76 |
| 90/7 5 | 2506 5907 511 | 90/75 SD R11 ISO S -5 | 90 | 75 | 8.2 | 13 8 | 27 2 | 73 | 68 | 6. 8 | 0.8 21 |
| 110/6 3 | 2506 51163 11 | 110/63 SD R11 ISO S -5 | 110 | 63 | 10 | 15 5 | 30 5 | 85 | 65 | 5. 8 | 1.24 |
| 110/7 5 | 2506 51175 11 | 110/75 SD R11 ISO S -5 | 110 | 75 | 10 | 14 9 | 30 5 | 83 | 68 | 6. 8 | 1.22 |
| 110/9 0 | 2506 51190 11 | 110/90 S DR11 ISO S-5 | 110 | 90 | 10 | 15 5 | 31 0 | 84 | 79 | 8. 2 | 1.3 |
| 125/7 5 | 2506 51275 11 | 125/75 S DR11 ISO S-5 | 125 | 75 | 11. 4 | 17 0 | 35 0 | 110 | 75 | 6. 8 | 1.82 |
| 125/9 0 | 2506 5129 011 | 125/90 S DR11 ISO S-5 | 125 | 90 | 11. 4 | 16 8 | 33 2 | 109 | 89 | 8. 2 | 1.7 |
| 125/1 10 | 2506 51211 11 | 125/110 S DR11 ISO S-5 | 125 | 110 | 11. 4 | 167 | 34 0 | 90 | 83 | 10 | 1.92 |
| 160/6 3 | 2506 5166 311 | 160/63 S DR11 ISO S-5 | 160 | 63 | 14. 6 | 17 2 | 34 0 | 99. 5 | 66 | 5. 8 | 2.6 2 |

| | | | | | | | | | | | |
|---------|---------------------|------------------------------|-----|-----|----------|---------|---------|-----------|----------|----------|----------|
| 160/75 | 2506 51675 11 | 160/75 S DR11 ISO S-5 | 160 | 75 | 14. 6 | 17 9 | 34 4 | 101 | 76 | 6. 8 | 2.6 8 |
| 160/90 | 2506 5169 011 | 160/90 S DR11 ISO S-5 | 160 | 90 | 14. 6 | 177 | 34 3 | 101 | 80 | 8. 2 | 2.7 |
| 160/110 | 2506 51611 11 | 160/110 S DR11 ISO S-5 | 160 | 110 | 14. 6 | 19 6 | 39 2 | 98 | 84. 5 | 10 | 3.2 6 |
| 180/90 | 2506 5189 011 | 180/90 S DR11 ISO S-5 | 180 | 90 | 16. 4 | 20 0 | 42 0 | 136 | 97 | 8. 2 | 4.4 2 |
| 180/110 | 2506 51811 11 | 180/110 S DR11 ISO S-5 | 180 | 110 | 16. 4 | 22 0 | 45 5 | 145 | 101 | 10 | 4.72 |
| 180/160 | 2506 51816 11 | 180/160 SDR11 ISO S-5 | 180 | 160 | 16. 4 | 20 4 | 41 2 | 105 | 94 | 14. 6 | 4.7 |
| 200/63 | 2506 5206 311 | 200/63 S DR11 ISO S-5 | 200 | 63 | 18. 2 | 22 6 | 55 3 | 134 | 82 | 5. 8 | 7.14 |
| 200/90 | 2506 5209 011 | 200/90 S DR11 ISO S-5 | 200 | 90 | 18. 2 | 22 9 | 55 0 | 13 4.5 | 96 | 8. 2 | 7.16 |
| 200/110 | 2506 52011 11 | 200/110 SDR11 ISO S-5 | 200 | 110 | 18. 2 | 24 2 | 55 0 | 134 | 103 | 10 | 7.34 |
| 200/125 | 2506 5201 211 | 200/125 SDR11 ISO S-5 | 200 | 125 | 18. 2 | 24 5 | 55 0 | 134 | 110 | 11. 4 | 7.34 |

| | | | | | | | | | | | |
|-------------|---------------------|------------------------------|-----|-----|----------|---------|---------|-----|-----|----------|-----------|
| 200/ 160 | 2506 5201 611 | 200/160 SDR11 ISO S-5 | 200 | 160 | 18. 2 | 27 0 | 55 0 | 134 | 114 | 14. 6 | 8.6 |
| 225/ 75 | 2506 5227 511 | 225/75 S DR11 ISO S-5 | 225 | 75 | 20. 5 | 22 6 | 44 0 | 120 | 75 | 6. 8 | 6.8 2 |
| 225/ 90 | 2506 5229 011 | 225/90 S DR11 ISO S-5 | 225 | 90 | 20. 5 | 22 4 | 44 2 | 120 | 79 | 8. 2 | 6.8 6 |
| 225/1 10 | 2506 52211 11 | 225/110 S DR11 ISO S-5 | 225 | 110 | 20. 5 | 22 6 | 43 9 | 120 | 85 | 10 | 6.9 |
| 225/1 60 | 2506 5221 611 | 225/160 SDR11 ISO S-5 | 225 | 160 | 20. 5 | 24 6 | 48 6 | 120 | 98 | 14. 6 | 8.4 6 |
| 225/1 80 | 2506 5221 811 | 225/180 SDR11 ISO S-5 | 225 | 180 | 20. 5 | 27 4 | 54 6 | 132 | 135 | 16. 4 | 9.3 2 |
| 250/ 50 | 2506 5255 011 | 250/50 S DR11 ISO S-5 | 250 | 50 | 22. 7 | 23 0 | 63 0 | 148 | 71 | 4. 6 | 13.1 |
| 250/ 75 | 2506 5257 511 | 250/75 S DR11 ISO S-5 | 250 | 75 | 22. 7 | 24 5 | 63 0 | 148 | 86 | 6. 8 | 13.1 2 |
| 250/1 10 | 2506 52511 11 | 250/110 S DR11 ISO S-5 | 250 | 110 | 22. 7 | 24 5 | 63 0 | 148 | 86 | 10 | 12.9 6 |
| 250/1 60 | 2506 5251 611 | 250/160 SDR11 ISO S-5 | 250 | 160 | 22. 7 | 27 0 | 62 5 | 148 | 100 | 14. 6 | 13.7 4 |

| | | | | | | | | | | | |
|---------|-------------|------------------------|-----|-----|------|-----|-----|-----|-------|------|-------|
| 250/180 | 25065251811 | 250/180 SDR11 ISO S-5 | 250 | 180 | 22.7 | 268 | 625 | 148 | 110 | 16.4 | 13.4 |
| 250/200 | 25065252011 | 250/200 SDR11 ISO S-5 | 250 | 200 | 22.7 | 294 | 625 | 148 | 116 | 18.2 | 14.54 |
| 315/90 | 25065319011 | 315/90 S DR11 ISO S-5 | 315 | 90 | 28.6 | 290 | 545 | 170 | 90 | 8.2 | 16.02 |
| 315/110 | 25065311111 | 315/110 S DR11 ISO S-5 | 315 | 110 | 28.6 | 290 | 546 | 170 | 100 | 10 | 15.9 |
| 315/125 | 25065311211 | 315/125 S DR11 ISO S-5 | 315 | 125 | 28.6 | 302 | 575 | 170 | 102.5 | 11.4 | 17.44 |
| 315/160 | 25065311611 | 315/160 S DR11 ISO S-5 | 315 | 160 | 28.6 | 310 | 575 | 170 | 120 | 14.6 | 17.52 |
| 315/180 | 25065311811 | 315/180 S DR11 ISO S-5 | 315 | 180 | 28.6 | 308 | 640 | 170 | 108 | 16.4 | 20 |
| 315/200 | 25065312011 | 315/200 SDR11 ISO S-5 | 315 | 200 | 28.6 | 326 | 640 | 170 | 126 | 18.2 | 21 |
| 315/225 | 25065312211 | 315/225 SDR11 ISO S-5 | 315 | 225 | 28.6 | 335 | 638 | 170 | 145 | 20.5 | 20 |
| 315/250 | 25065312511 | 315/250 SDR11 ISO S-5 | 315 | 250 | 28.6 | 333 | 670 | 170 | 150 | 22.7 | 21.46 |

Ventilation End Cap

Agruline

AGRU Code: 064.1 Injection Moulded Butt Weld & Socket Weld Available in PE100 Black



| DIMENSION | CODE | DETAIL | da(OD) m | s m | L m | t m | WEIGHT |
|---------------|-----------------|------------------------|----------|------|-----|-----|--------|
| SDR 17 | | | | | | | |
| 90 | 250641090 17 | 90X5.4 SDR17 ISO S-8 | 90 | 5.4 | 190 | 134 | 0.389 |
| 110 | 2506411101 7 | 110X6.6 SDR17 ISO S-8 | 110 | 6.6 | 214 | 155 | 0.569 |
| 125 | 2506411251 7 | 125X7.4 SDR17 ISO S-8 | 125 | 7.4 | 214 | 165 | 0.64 |
| 160 | 250641160 17 | 160X9.5 SDR17 ISO S-8 | 160 | 9.5 | 238 | 183 | 1 |
| 180 | 250641180 17 | 180X10.7 SDR17 ISO S-8 | 180 | 10.7 | 271 | 216 | 1.215 |
| 200 | 250641200 17 | 200X11.9 SDR17 ISO S-8 | 200 | 11.9 | 260 | 212 | 1.46 |
| 225 | 250641225 17 | 225X13.4 SDR17 ISO S-8 | 225 | 13.4 | 280 | 238 | 2.14 |
| SDR 11 | | | | | | | |
| 63 | 250641063 11 | 63X5.8 SDR11 ISO S-5 | 63 | 5.8 | 159 | 116 | 0.272 |

| | | | | | | | |
|-----|-------------|------------------------|-----|------|-----|-----|-------|
| 90 | 25064109011 | 90X8.2 SDR11 ISO S-5 | 90 | 8.2 | 190 | 134 | 0.428 |
| 110 | 25064111011 | 110X10.0 SDR11 ISO S-5 | 110 | 10 | 211 | 155 | 0.648 |
| 125 | 25064112511 | 125X11.4 SDR11 ISO S-5 | 125 | 11.4 | 215 | 165 | 0.769 |
| 160 | 25064116011 | 160X14.6 SDR11 ISO S-5 | 160 | 14.6 | 245 | 183 | 1.38 |
| 180 | 25064118011 | 180X16.4 SDR11 ISO S-5 | 180 | 16.4 | 236 | 216 | 1.66 |
| 200 | 25064120011 | 200X18.2 SDR11 ISO S-5 | 200 | 18.2 | 260 | 212 | 2.21 |
| 225 | 25064122511 | 225X20.5 SDR11 ISO S-5 | 225 | 20.5 | 280 | 238 | 3.1 |

Renowned Supplier of High Quality Plastic Products

Call Us
(tel:1300136698)

Email Us
(mailto:sales@agru.com.au)



Agru Australia Pty Ltd