

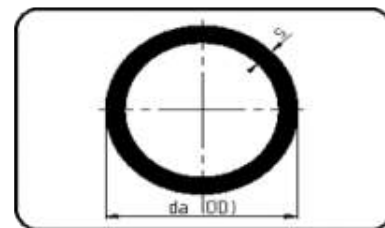
# PN25 – 5m Pipe

## Agruline

**AGRU Code: 705**

**Extruded**

Available in PE100 Black



DIMENSION	CODE	DETAIL	da(OD) mm	da(OD) mm	Weight
63	25705006307	63X8.6 SDR7.4 ISO S-3.2	63	63	1.49
75	25705007507	75X10.3 SDR7.4 ISO S-3.2	75	75	2.115
90	25705009007	90X12.30 SDR7.4 ISO S-3.2	90	90	3.03
110	25705011007	110X15.1 SDR7.4 ISO S-3.2	110	110	4.54
125	25705012507	125X17.1 SDR7.4 ISO S-3.2	125	125	5.84
160	25705016007	160X21.9 SDR7.4 ISO S-3.2	160	160	9.54
200	25705020007	200X27.4 SDR7.4 ISO S-3.2	200	200	14.9
225	25705022507	225x30.8 SDR7.4 ISO S-3.2	225	225	18.8
250	25705025007	250X34.2 SDR7.4 ISO S-3.2	250	250	23.3
280	25705028007	280X38.3 SDR7.4 ISO S-3.2	280	280	29.2
315	25705031507	315X43.1 SDR7.4 ISO S-3.2	315	315	36.9
355	25705035507	355X48.5 SDR7.4 ISO S-3.2	355	355	46.8
400	25705040007	400x54.7 SDR7.4 ISO S-3.2	400	400	59.4

450	25705045007	450X61.5 SDR7.4 ISO S-3.2	450	450	75.2
500	25705050007	500x68.3 SDR7.4 ISO S-3.2	500	500	92.8

## PN25 – 90° Elbow – Long Spigot

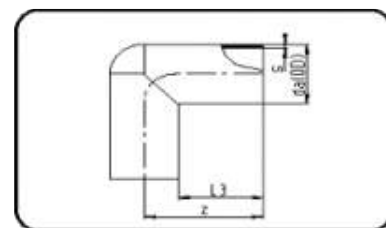
### Agruline

**AGRU Code: 061**

**Injection Moulded**

Butt Weld & Socket Weld

Available in PE100 Black



DIMENSION	CODE	DETAIL	da(O D) mm	s mm	z mm	L3 mm	Weight t
63	2506100630 7	63X8.6 SDR7.4 ISO S-3. 2	63	8.6	109	78	0.309
75	2506100750 7	75X10.3 SDR7.4 ISO S-3. 2	75	10. 3	128	87	0.521
90	2506100900 7	90X12.3 SDR7.4 ISO S-3. 2	90	12. 3	130	84	0.756
110	2506101100 7	110X15.1 SDR7.4 ISO S-3. 2	110	15.1	149	91	1.266
125	2506101250 7	125X17.1 SDR7.4 ISO S-3. 2	125	17.1	168	101	1.879
160	2506101600 7	160X21.9 SDR7.4 ISO S- 3.2	160	21.9	181	101	3.28
200	2506102000 7	200X27.4 SDR7.4 ISO S-3. 2	200	27. 4	216. 5	117. 5	6.169

# PN25 – Concentric Reducer – Long Spigot

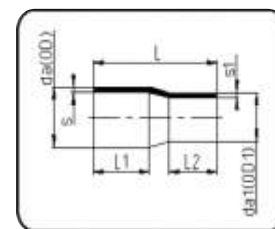
## Agruline

**AGRU Code: 067**

**Injection Moulded**

Butt Weld & Socket Weld

Available in PE100 Black



DIMENSION da(OD) mm	CODE	DETAIL	da1 (O D1) mm	s m m	L mm	L1 mm	L2 mm	s1 m m	WEIG HT
110/63	2506711 6307	110/63 SDR7.4 IS O S-3.2	63	15.1	182	82	63	8.6	0.613
110/90	2506711 9007	110/90 SDR7.4 IS O S-3.2	90	15.1	182	83	79	12. 3	0.715
125/63	2506712 6307	125/63 SDR7.4 IS O S-3.2	63	17.1	19 2.5	89. 5	65	8.6	0.791
125/90	2506712 9007	125/90 SDR7.4 I SO S-3.2	90	17.1	189	87	77	12. 3	0.84 8
125/110	2506712 1107	125/110 SDR7.4 I SO S-3.2	110	17.1	197. 5	87	86	15.1	1.129
160/90	2506716 9007	160/90 SDR7.4 I SO S-3.2	90	21. 9	219. 5	91.5	81	12. 3	1.6
160/125	2506716 1207	160/125 SDR7.4 I SO S-3.2	125	21. 9	232	10 4.5	87. 5	17.1	1.917
200/16 0	2506720 1607	200/160 SDR7.4 ISO S-3.2	160	27. 4	251	99. 5	10 8.5	21. 9	3.013
225/16 0	2506722 1607	225/160 SDR7.4 ISO S-3.2	160	30. 8	268	121. 5	107. 5	21. 9	3.922

250/160	2506725 1607	250/160 SDR7.4 ISO S-3.2	160	34.2	290	154	107.5	21.9	5.92
250/225	2506725 2207	250/225 SDR7.4 ISO S-3.2	225	34.2	312	154	132	30.8	7.05

## PN25 – Concentric Reducer – Short Spigot

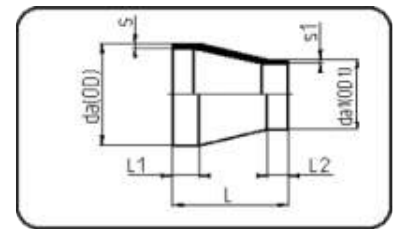
### Agruline

**AGRU Code: 317**

**Machined**

Butt Weld

Available in PE100 Black



DIMENSION da(OD) mm	CODE	DETAIL	DIMENSION da(OD) mm	da1 (OD1) mm	s mm	L mm	L1 mm	L2 mm	s1 mm	Weight
250/200	253172 52007	250/200 SDR 7.4 ISO S-3.2	250	200	34.2	200	60	40	27.4	4.08
280/160	253172 81607	280/160 SDR 7.4 ISO S-3.2	280	160	38.3	200	60	40	21.9	4.6
280/200	253172 82007	280/200 SDR 7.4 ISO S-3.2	280	200	38.3	200	60	40	27.4	4.62
280/225	253172 82207	280/225 SDR 7.4 ISO S-3.2	280	225	38.3	200	60	40	30.8	4.99
280/250	253172 82507	280/250 SDR 7.4 ISO S-3.2	280	250	38.3	200	60	40	34.2	5.23
315/225	253173 12207	315/225 SDR 7.4 ISO S-3.2	315	225	43.1	200	60	40	30.8	6.08
315/250	253173 12507	315/250 SDR 7.4 ISO S-3.2	315	250	43.1	200	60	40	34.2	6.45

315/280	253173 12807	315/280 SDR 7.4 ISO S-3.2	315	280	43.1	200	60	40	38.3	7.2
355/225	253173 52207	355/225 SDR 7.4 ISO S-3.2	355	225	48.5	250	65	45	30.8	6.75
355/250	253173 52507	355/250 SDR 7.4 ISO S-3.2	355	250	48.5	250	65	45	34.2	6.93
355/280	253173 52807	355/280 SDR 7.4 ISO S-3.2	355	280	48.5	250	65	45	38.3	7.3
355/315	253173 53107	355/315 SDR 7.4 ISO S-3.2	355	315	48.5	250	65	45	43.1	11.2
400/225	253174 02207	400/225 SDR 7.4 ISO S-3.2	400	225	54.7	250	65	45	30.4	10.95
400/250	253174 02507	400/250 SDR 7.4 ISO S-3.2	400	250	54.7	250	65	45	34.2	11.92
400/315	253174 03107	400/315 SDR 7.4 ISO S-3.2	400	315	54.7	250	65	45	43.1	13.01
400/355	253174 03507	400/355 SDR 7.4 ISO S-3.2	400	355	54.7	250	65	75	48.5	13.99
450/280	253174 52807	450/280 SDR 7.4 ISO S-3.2	450	280	61.5	250	65	45	38.3	18
450/315	253174 53107	450/315 SDR 7.4 ISO S-3.2	450	315	61.5	250	65	45	43.1	18.85
450/355	253174 53507	450/355 SDR 7.4 ISO S-3.2	450	355	61.5	250	65	75	48.5	19.46
450/400	253174 54007	450/400 SDR 7.4 ISO S-3.2	450	400	61.5	250	65	75	54.7	20.07
500/355	253175 03507	500/355 SDR 7.4 ISO S-3.2	500	355	68.3	250	65	75	48.5	21.16

500/400	25317504007	500/400 SDR 7.4 ISO S-3.2	500	400	68.3	250	65	75	54.7	21.89
---------	-------------	---------------------------	-----	-----	------	-----	----	----	------	-------

# PN25 – End Cap – Long Spigot

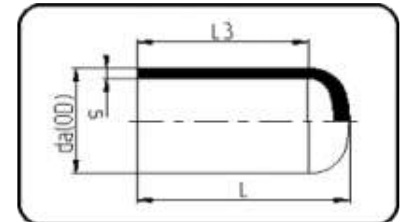
## Agruline

**AGRU Code: 064**

**Injection Moulded**

Butt Weld & Socket Weld

Available in PE100 Black



DIMENSION	CODE	DETAIL	da(OD) mm	s mm	L mm	L3 mm	WEIGHT
63	25064006307	63X8.6 SDR7.4 ISO S-3.2	63	8.6	84	68	0.107
75	25064007507	75X10.3 SDR7.4 ISO S-3.2	75	10.3	94	75	0.173
90	25064009007	90X12.3 SDR7.4 ISO S-3.2	90	12.3	104	81	0.293
110	25064011007	110X15.1 SDR7.4 ISO S-3.2	110	15.1	118	94	0.558
125	25064012507	125X17.1 SDR7.4 ISO S-3.2	125	17.1	132.5	100.5	0.68
160	25064016007	160X21.9 SDR7.4 ISO S-3.2	160	21.9	146	103.5	1.41
200	25064020007	200X27.4 SDR7.4 ISO S-3.2	200	27.4	180	121.5	2.6
225	25064022507	225X30.8 SDR7.4 ISO S-3.2	225	30.8	195	125	3.41

# PN25 – End Cap – Short Spigot

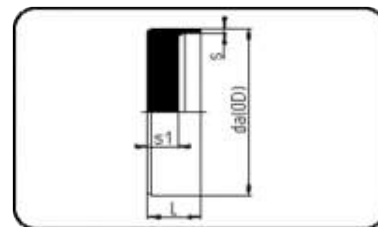
Agruline

**AGRU Code: 302**

**Machined**

Butt Weld

Available in PE100 Black



DIMENSION	CODE	DETAIL	da(OD) mm	s inch	L mm	s1 mm	Weight
250	25302025007	250 SDR7.4 ISO S-3.2	250	34.2	80	55	4.5
280	25302028007	280 SDR7.4 ISO S-3.2	280	38.3	85	60	5.5
315	25302031507	315 SDR7.4 ISO S-3.2	315	43.1	90	65	6.7
355	25302035507	355 SDR7.4 ISO S-3.2	355	48.5	100	75	7.9
400	25302040007	400 SDR7.4 ISO S-3.2	400	54.7	105	80	9.5
450	25302045007	450 SDR7.4 ISO S-3.2	450	50.3	120	95	11.2
500	25302050007	500 SDR7.4 ISO S-3.2	500	68.3	130	105	12.6

# PN25 – Reducing Tee – Short Spigot

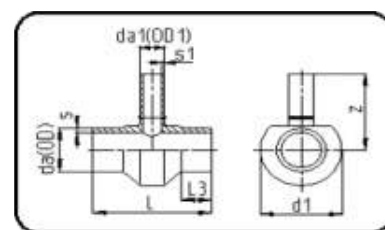
Agruline

**AGRU Code: 307**

**Machined**

Butt Weld

Available in PE100 Black



<b>DIMENSION da(OD) mm</b>	<b>CODE</b>	<b>DETAIL</b>	<b>da1 (OD1) mm</b>	<b>s inc h</b>	<b>z inc h</b>	<b>L3 m m</b>	<b>s1 m m</b>	<b>d1 m m</b>	<b>L m m</b>	<b>Wei ght</b>
90/63	253079 06307	90/63 SDR7.4 ISO S-3.2	63	12. 3	170	50	8.6	15 4	21 3	1.6
90/75	253079 07507	90/75 SDR7.4 I SO S-3.2	75	12. 3	170	50	10. 3	15 9	22 5	1.9
110/63	2530711 6307	110/63 SDR7.4 ISO S-3.2	63	15. 1	180	50	8.6	17 2	21 3	2.4
110/90	2530711 9007	110/90 SDR7.4 ISO S-3.2	90	15. 1	180	50	12. 3	18 4	24 0	2.8
125/63	253071 26307	125/63 SDR7.4 ISO S-3.2	63	17.1	187. 5	50	8.6	18 6	21 3	3.4
125/90	253071 29007	125/90 SDR7.4 ISO S-3.2	90	17.1	187. 5	50	12. 3	19 7	24 0	3.6
140/63	253071 46307	140/63 SDR7.4 ISO S-3.2	63	19. 2	195	50	8.6	20 1	21 3	4.3
140/90	253071 49007	140/90 SDR7. 4 ISO S-3.2	90	19. 2	195	50	12. 3	21 1	24 0	4.6
140/110	253071 41107	140/110 SDR7. 4 ISO S-3.2	110	19. 2	195	50	15. 1	22 0	26 0	5
140/125	253071 41207	140/125 SDR7. 4 ISO S-3.2	125	19. 2	195	50	17.1	22 8	27 5	5.4
160/63	253071 66307	160/63 SDR7.4 ISO S-3.2	63	21. 9	205	50	8.6	22 0	21 3	6.1
160/90	253071 69007	160/90 SDR7. 4 ISO S-3.2	90	21. 9	205	50	12. 3	22 9	24 0	6.6



160/110	253071 61107	160/110 SDR7.4 ISO S-3.2	110	21.9	205	50	15.1	23.8	26.0	6.1
160/125	253071 61207	160/125 SDR7.4 ISO S-3.2	125	21.9	205	50	17.1	24.5	27.5	7.1
180/63	253071 86307	180/63 SDR7.4 ISO S-3.2	63	24.6	215	50	8.6	23.9	21.3	7.8
180/90	253071 89007	180/90 SDR7.4 ISO S-3.2	90	24.6	215	50	12.3	24.7	24.0	8.5
180/110	253071 81107	180/110 SDR7.4 ISO S-3.2	110	24.6	215	50	15.1	25.5	26.0	9.4
180/125	253071 81207	180/125 SDR7.4 ISO S-3.2	125	24.6	215	50	17.1	26.2	27.5	9.7
200/63	253072 06307	200/63 SDR7.4 ISO S-3.2	63	27.4	225	50	8.6	25.8	21.3	10
200/90	253072 09007	200/90 SDR7.4 ISO S-3.2	90	27.4	225	50	12.3	26.6	24.0	10.3
200/110	253072 01107	200/110 SDR7.4 ISO S-3.2	110	27.4	225	50	15.1	27.4	26.0	10.7
200/125	253072 01207	200/125 SDR7.4 ISO S-3.2	125	27.4	225	50	17.1	28.0	27.5	10.9
200/140	253072 01407	200/140 SDR7.4 ISO S-3.2	140	27.4	225	50	19.2	28.7	29.0	11.3
200/160	253072 01607	200/160 SDR7.4 ISO S-3.2	160	27.4	225	50	21.9	29.7	31.0	11.8
225/63	253072 26307	225/63 SDR7.4 ISO S-3.2	63	30.8	237.5	50	8.6	28.3	21.3	13.4
225/90	253072 29007	225/90 SDR7.4 ISO S-3.2	90	30.8	237.5	50	12.3	29.0	24.0	14.6

225/110	253072 21107	225/110 SDR7.4 ISO S-3.2	110	30.8	23 7.5	50	15.1	29 7	26 0	15.8
225/125	253072 21207	225/125 SDR7.4 ISO S-3.2	125	30.8	23 7.5	50	17.1	30 3	27 5	17
250/63	253072 56307	250/63 SDR7.4 ISO S-3.2	63	34.2	250	50	8.6	30 7	21 3	18.2
250/90	253072 59007	250/90 SDR7.4 ISO S-3.2	90	34.2	250	50	12.3	31 4	24 0	19.5
250/110	253072 51107	250/110 SDR7.4 ISO S-3.2	110	34.2	250	50	15.1	32 0	26 0	20.7
280/63	253072 86307	280/63 SDR7.4 ISO S-3.2	63	38.3	265	50	8.6	33 6	21 3	21.9
280/90	253072 89007	280/90 SDR7.4 ISO S-3.2	90	38.3	265	50	12.3	34 3	24 0	23.1
280/110	253072 81107	280/110 SDR7.4 ISO S-3.2	110	38.3	265	50	15.1	34 8	26 0	24.3
280/125	253072 81207	280/125 SDR7.4 ISO S-3.2	125	38.3	265	50	17.1	35 3	27 5	25.5
315/63	253073 16307	315/63 SDR7.4 ISO S-3.2	63	43.1	28 2.5	50	8.6	37 1	21 3	26.8
315/90	253073 19007	315/90 SDR7.4 ISO S-3.2	90	43.1	28 2.5	50	12.3	37 6	24 0	28
315/110	253073 11107	315/110 SDR7.4 ISO S-3.2	110	43.1	28 2.5	50	15.1	38 2	26 0	29.1
315/160	253073 11607	315/160 SDR7.4 ISO S-3.2	160	43.1	28 2.5	50	21.9	39 9	31 0	30
315/180	253073 11807	315/180 SDR7.4 ISO S-3.2	180	43.1	33 2.5	50	24.6	40 7	33 0	31.3

355/63	253073 56307	355/63 SDR7. 4 ISO S-3.2	63	48. 5	30 2.5	75	8.6	41 0	26 3	33.8
355/90	253073 59007	355/90 SDR7. 4 ISO S-3.2	90	48. 5	30 2.5	75	12. 3	41 5	29 0	34.3
355/110	253073 51107	355/110 SDR7. 4 ISO S-3.2	110	48. 5	30 2.5	75	15. 1	42 0	31 0	35.3
355/160	253073 51607	355/160 SDR7. 4 ISO S-3.2	160	48. 5	30 2.5	75	21. 9	43 6	36 0	36.2
355/180	253073 51807	355/180 SDR7. 4 ISO S-3.2	180	48. 5	35 2.5	75	24. 6	44 4	38 0	37.2
400/63	253074 06307	400/63 SDR7. 4 ISO S-3.2	63	54. 7	325	75	8.6	45 5	26 3	40.7
400/90	253074 09007	400/90 SDR7. 4 ISO S-3.2	90	54. 7	325	75	12. 3	45 9	29 0	42.6
400/110	253074 01107	400/110 SDR7. 4 ISO S-3.2	110	54. 7	325	75	15. 1	46 4	31 0	43.4
400/125	253074 01207	400/125 SDR7. 4 ISO S-3.2	125	54. 7	325	75	17.1	46 8	32 5	44.6
400/140	253074 01407	400/140 SDR7. 4 ISO S-3.2	140	54. 7	325	75	19. 2	47 2	34 0	46
400/160	253074 01607	400/160 SDR7. 4 ISO S-3.2	160	54. 7	325	75	21. 9	47 8	36 0	47.3
400/180	253074 01807	400/180 SDR7. 4 ISO S-3.2	180	54. 7	375	75	24. 6	48 5	38 0	49.9
450/63	253074 56307	450/63 SDR7. 4 ISO S-3.2	63	61. 5	35 0	75	8.6	50 4	26 3	49.3
450/110	253074 51107	450/110 SDR7. 4 ISO S-3.2	110	61. 5	35 0	75	15. 1	51 2	31 0	50.1

450/160	253074 51607	450/160 SDR7.4 ISO S-3.2	160	61.5	350	75	21.9	525	360	51.1
450/180	253074 51807	450/180 SDR7.4 ISO S-3.2	180	61.5	400	75	24.6	532	380	51.9
450/225	253074 52207	450/225 SDR7.4 ISO S-3.2	225	61.5	400	75	30.8	549	425	51.1
500/63	253075 06307	500/63 SDR7.4 ISO S-3.2	63	68.3	375	75	8.6	554	263	51.9
500/110	253075 01107	500/110 SDR7.4 ISO S-3.2	110	68.3	375	75	15.1	561	310	52.8
500/160	253075 01607	500/160 SDR7.4 ISO S-3.2	160	68.3	375	75	21.9	573	360	53.5
500/180	253075 01807	500/180 SDR7.4 ISO S-3.2	180	68.3	425	75	24.6	579	380	54.1
500/225	253075 02207	500/225 SDR7.4 ISO S-3.2	225	68.3	425	75	30.8	595	425	54.7

## PN25 – Stub Flange – Short Spigot

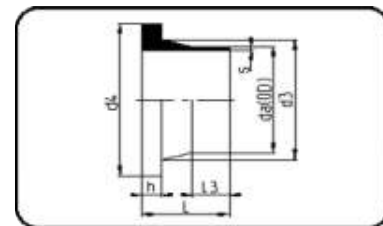
### Agruline

**AGRU Code: 312**

**Machined**

Butt Weld

Available in PE100 Black



DIMENSION	CODE	DETAIL	da (OD) mm	s mm	L mm	L3 mm	d3 mm	d4 mm	h mm	Weight

250	25312 4250 07	250 SDR 7.4 ISO S -3.2	250	34.2	130	58	285	33 4	41	5. 3
280	25312 4280 07	280 SDR 7.4 ISO S -3.2	280	38.3	128	58	291	33 4	45	5. 6
315	25312 43150 7	315 SDR 7.4 ISO S -3.2	315	43.1	136	65	335	38 0	47	7.4
355	25312 0355 07	355 SDR 7.4 ISO S -3.2	355	48.5	150	70	373	43 0	52	10. 4
400	25312 0400 07	400 SDR 7.4 ISO S -3.2	400	54.7	155	69	427	48 2	58	12. 8
450	25312 4450 07	450 SDR 7.4 ISO S -3.2	450	61.5	166	63	514	54 5	69	2 3.1
500	25312 0500 07	500 SDR 7.4 ISO S -3.2	500	68.3	175	70	530	58 5	71	2 2. 5

## PN25 – Stub Flange AS4087 – Long Spigot

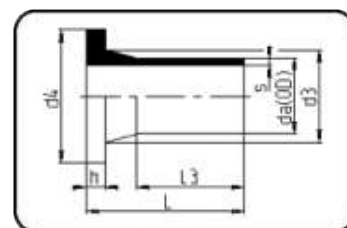
### Agruline

**AGRU Code: 062**

**Injection Moulded**

Butt Weld & Socket Weld

Available in PE100 Black



DIMENSION	CODE	DETAIL	da(0) D) mm	s m m	L m m	L3 m m	d3 m m	d4 m m	h m m	Weight
-----------	------	--------	-------------------	-------------	-------------	--------------	--------------	--------------	-------------	--------

63	250624 06307	63X8.6 SDR7.4 I SO S-3.2	63	8.6	118	78	75	10 2	14	0.26 5
75	250624 07507	75X10.3 SDR7.4 I SO S-3.2	75	10. 3	128	86	89	12 2	16	0.40 9
90	250624 09007	90X12.3 SDR7.4 ISO S-3.2	90	12. 3	140	95	10 5	13 8	17	0.60 3
110	250620 11007	110X15.1 SDR7.4 ISO S-3.2	110	15. 1	140	97	12 5	15 8	18	0.87 8
125	250620 12507	125X17.1 SDR7.4 ISO S-3.2	125	17.1	18 3.5	12 1.5	13 2	15 8	25	1.30 7
160	250620 16007	160X21.9 SDR7.4 ISO S-3.2	160	21. 9	181. 5	119. 5	17 5	21 2	25	2.19
200	250620 20007	200x27.4 SDR7. 4 ISO S-3.2	200	27. 4	18 0.5	12 1.5	23 2	26 8	32	3.6
225	250620 22507	225X30.8 SDR7. 4 ISO S-3.2	225	30. 8	184	129	23 5	26 8	32	4.02 4

## PN25 – Tee – Long Spigot

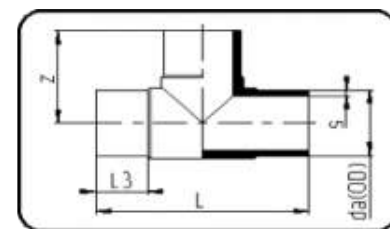
### Agruline

**AGRU Code: 066**

**Injection Moulded**

Butt Weld & Socket Weld

Available in PE100 Black



DIMENSI ON	CODE	DETAIL	da(0 D) mm	s m m	z mm	L m m	L3 m m	WEIG HT
63	25066006 307	63X8.6 SDR7.4 ISO S -3.2	63	8.6	111	219	63	0.489

90	25066009007	90X12.3 SDR7.4 ISO S-3.2	90	12.3	141	284	79	1.276
110	25066011007	110X15.1 SDR7.4 ISO S-3.2	110	15.1	158	315	82	2.08
125	25066012507	125X17.1 SDR7.4 ISO S-3.2	125	17.1	171.5	342	89.5	2.873
160	25066016007	160X21.9 SDR7.4 ISO S-3.2	160	21.9	203	405	99	5.48
200	25066020007	200X27.4 SDR7.4 ISO S-3.2	200	27.4	247	495	115	11.1
225	25066022507	225X30.8 SDR7.4 ISO S-3.2	225	30.8	273.5	545	120	14.7

## Renowned Supplier of High Quality Plastic Products

Call Us  
(tel:1300136698)

Email Us  
(mailto:sales@agru.com.au)



**Agru Australia Pty Ltd**